

CIDEON

engineering digitized.

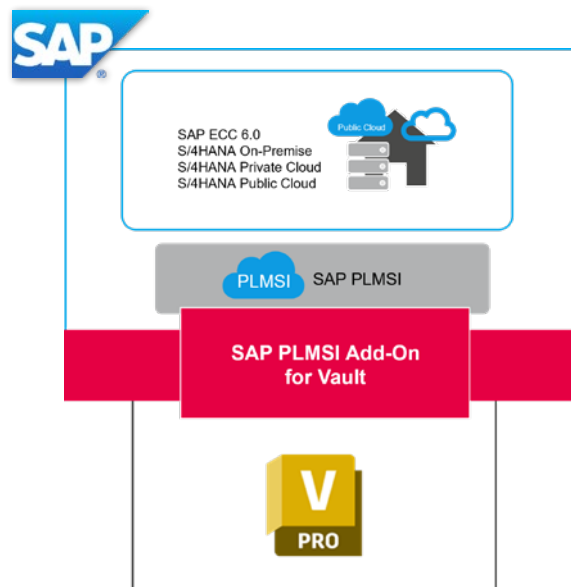
Cideon – engineering digitized.

SAP PLMSI Add-On for Vault

With the SAP PLMSI Add-On for Vault, you can optimize the exchange of product information between Autodesk Vault Professional and SAP - now also in the public cloud. Whether you use SAP S/4HANA on-premises, in the private cloud, or in the public cloud, our solution provides the ideal foundation for seamless integration.

Designers can continue to efficiently manage their CAD data in Autodesk Vault, while the information is automatically made available in real-time for downstream logistics processes in SAP.

This extension offers maximum flexibility for companies that rely on modern cloud architectures. Cideon now covers every SAP S/4HANA deployment option with a Vault interface - for smooth operation, always up-to-date data, and ease of use.



Cideon develops the SAP Add-On for Vault exclusively for SAP SE.



PROZESSBERATUNG

ENGINEERING-SOFTWARE

IMPLEMENTIERUNG

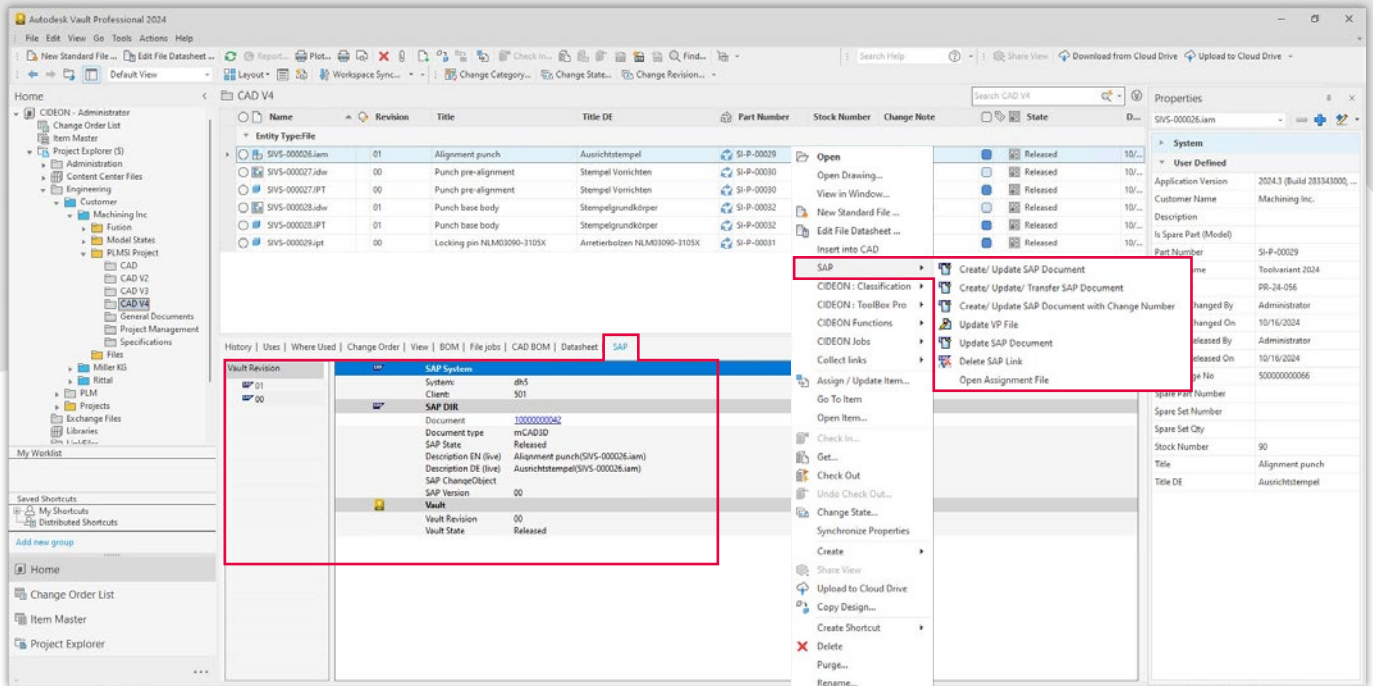
GLOBAL SUPPORT

FRIEDHELM LOH GROUP



SAP PLMSI Add-On for Vault

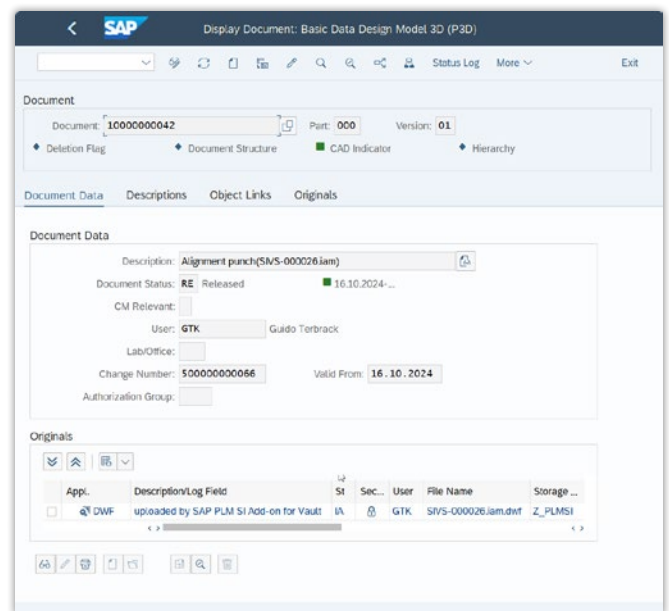
Overview of Features



The functions for the selected documents are performed from the SAP menu in Vault.
The SAP tab also displays the relevant SAP information for a selected Vault document.

Transfer of Vault Documents to SAP Document Management System (DMS):

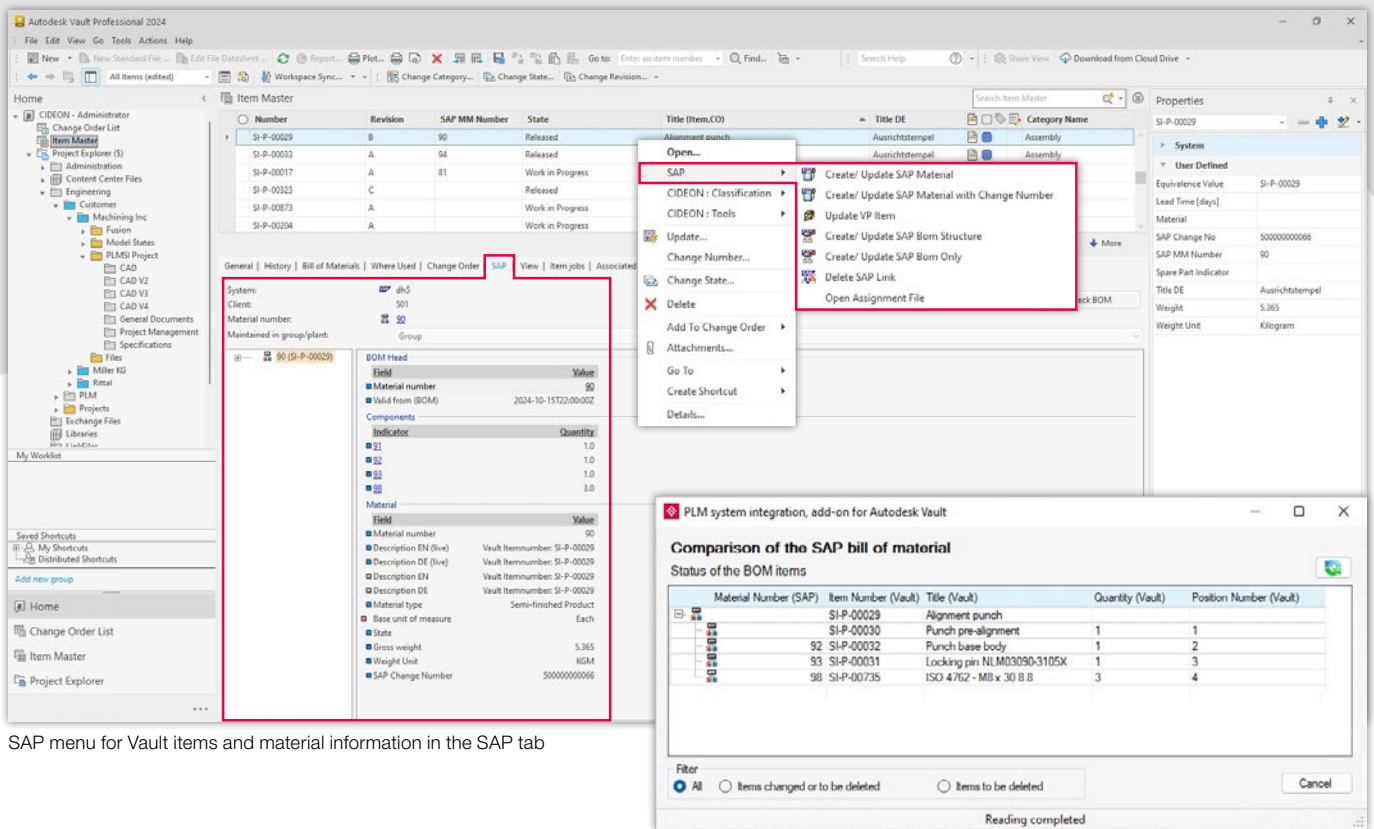
- Multilingual creation/updating of SAP Document Info Records (DIR) directly from Vault
- Metadata mapping (bidirectional)
- Versioning of SAP DIR
- Support of the SAP release process directly from Vault (status management)
- Transfer of original files/neutral formats to the SAP DIR
- Direct display of SAP information in the SAP Fiori UI



SAP DIR with transferred Vault meta information and file

SAP PLMSI Add-On for Vault

Overview of Features



SAP menu for Vault items and material information in the SAP tab

SAP BOM comparison dialog

Transfer of Vault Items to SAP Material Management

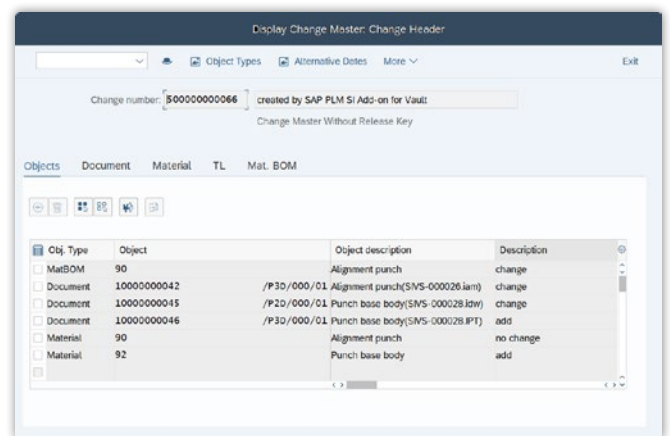
- Ability to create SAP Material Masters (MAT) with long text in multiple languages
- Update Autodesk Vault Professional data in SAP MAT data fields
- Direct display of SAP information in the SAP Fiori UI

Transfer of Vault Bill of Materials to SAP BOM

- Creation of SAP BOM
- Change/update Vault data in SAP BOM data fields
- Direct display of SAP BOMs in the SAP Fiori UI

Support for SAP Change Master Records

- Creation of change master records when transferring SAP DIRs, SAP MATs and SAP BOMs



SAP change master with assigned Vault documents, materials and parts list

Advantages with SAP PLMSI

What is SAP PLM System Integration (PLMSI)?

SAP PLMSI is the intelligent solution for seamlessly connecting the SAP S/4HANA software portfolio with external PDM and PLM systems - without additional middleware. SAP S/4HANA enables the connection of multiple PLM systems with different configurations based on logical instance and application.

This provides optimal coverage of the entire product lifecycle - from the initial idea to end-of-life. Departments such as engineering, marketing, sales, and even external partners can be easily and efficiently integrated into product development, enabling end-to-end collaboration and faster innovation processes.

Versions und System Requirements

- SAP ECC 6.0 EHP8 or
- SAP S/4HANA (on-premise, public or private cloud)
- SAP PLMSI 2.0 FP04 and higher
- Vault Professional 2024



SAP PLMSI Add-On for Vault - Your Benefits

- **Reduction of effort**
No more duplicate entries - this saves time and reduces errors.
- **Access to all relevant information**
Each user works in "his" system, but has access to all the data he needs to keep things running smoothly.
- **Data quality and up-to-dateness ensured**
All data is always correct and up-to-date throughout the entire product life cycle, making decision-making easier.
- **Optimized collaboration**
Departments and teams can work together more efficiently as data and processes are synchronized across departments.
- **Increased flexibility**
Flexible adaptation to new requirements and rapid scalability thanks to seamless integration of different systems.
- **Secure and transparent processes**
Data security and consistency are guaranteed across the entire value chain, which promotes reliable and traceable processes between departments.
- **Accelerated time to market**
Thanks to efficient data processes and clear workflows, products can be brought to market faster.

CIDEON Software & Services GmbH & Co. KG
Lochamer Schlag 11 · D-82166 Gräfelfing
Phone +49 (0) 89 909003-0 · Fax +49 (0) 89 909003-250
info@cideon.com · www.cideon.com

PROCESS CONSULTING

ENGINEERING SOFTWARE

IMPLEMENTATION

GLOBAL SUPPORT

FRIEDHELM LOH GROUP

