

# CIDEON

engineering digitized.

Cideon – engineering digitized.

## Cideon Toolbox for Autodesk Vault

Vault Professional is Autodesk's most comprehensive PDM product, offering a wide range of features for unified and transparent data management, including direct CAD integration for mechanical, electrical, and fluid design data.

### Small Tools, Big Impact:

#### Make Your Design Processes More Productive!

The Cideon Toolbox for Autodesk Vault is the ultimate collection of valuable add-ons that extend the standard functionality of Vault. These everyday helpers provide a noticeable boost to your daily work by increasing comfort, improving efficiency and ensuring quality.

**AUTODESK**  
Platinum Partner



#### Your Benefits:

- Immediate availability
- Cost certainty
- Flexible configuration

#### The Cideon Vault Add-Ons:

Conversion Jobs

PDF Stamping/  
Watermarks

Collections

Classification/  
List of Characteristics

Display Bill of Materials

Attribute Inheritance

Tools for better  
File Handling

Template Folders

PROCESS CONSULTING

ENGINEERING SOFTWARE

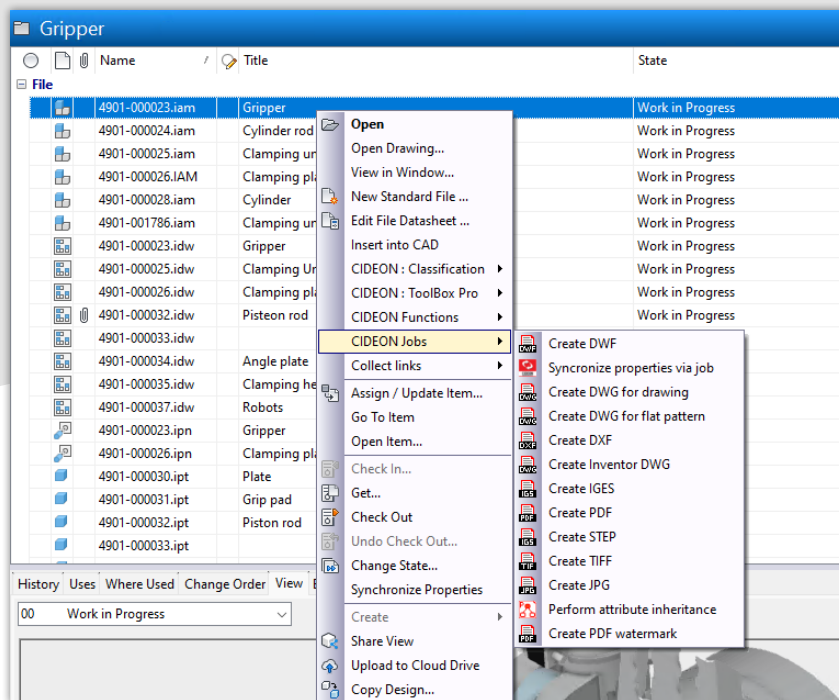
IMPLEMENTATION

GLOBAL SUPPORT

FRIEDHELM LOH GROUP



## Conversion Jobs



Context-sensitive menu for format conversion in Vault

### Create (Different) Target Formats From Your CAD Files

The Cideon Toolbox offers several advantages over the standard functionality of Vault when creating PDF files, allowing you to flexibly meet your individual requirements.

In addition, depending on the source format, you can generate other formats such as DXF, IGES, STEP, TIFF, JPG, or specialized redlining DWFs using the included tools.

Rename files during export and decide which, if any, properties of the drawing or model are transferred to the export format. Configure export file locations to suit your needs; for example, you can collect all of a project's PDFs in a project-specific subfolder in the Vault and/or in an externally configurable location.

You can always see whether your export formats are up to date or need to be re-created. Automatic integration with your release process initiates the conversion or a defined sequence of individual jobs. Ad hoc conversions can also be easily performed by the user via the context-sensitive menu of an original file.

Name	Titel	Datei...	Revision	Status	Engage...	Ordne...
00000670.idw	Maschinenkörper	idw	B	In Bearbeitung		17.12.2024 11:13 \$/Dok...
00000671.idw	Bodenplatte	idw	A	In Bearbeitung		03.02.2025 17:11 \$/Dok...
00000672.idw	Dach Führerhaus	idw	B	In Bearbeitung		17.12.2024 11:13 \$/Dok...
00000673.idw	Front Führerhaus	idw	A	In Bearbeitung		17.12.2024 11:14 \$/Dok...

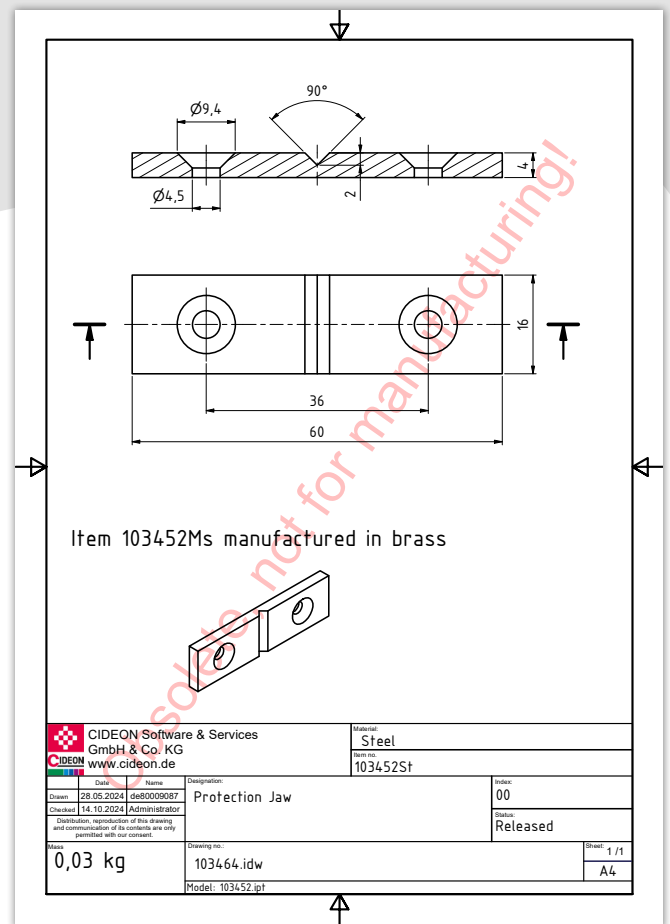
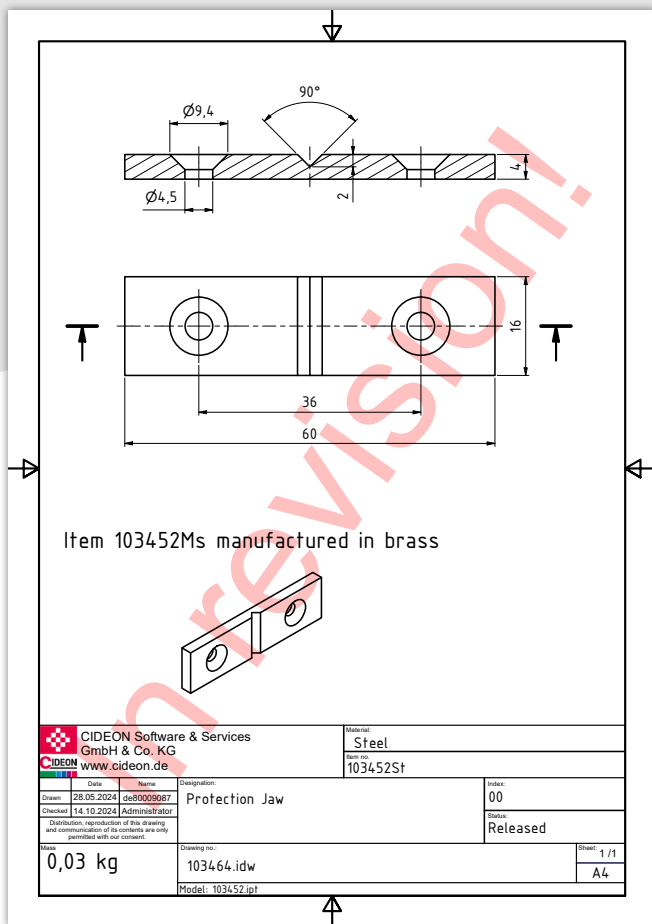
Dateiname	Titel	Revision	Status (Historisch)	Erstellt von	Eingecheckt	Kommentar
00000671.idw	Bodenplatte	A	In Bearbeitung	CIDEON-Jobserver	03.02.2025 17:11	Add Attachments '000006...
Attachments						
00000671.pdf	Bodenplatte		Erstellt	CIDEON-Jobserver	12.08.2024 09:23	Added Watermark
00000671.dxf	Bodenplatte		Erstellt	CIDEON-Jobserver	03.02.2025 17:11	UpdateFileProperties
00000671.tif	Bodenplatte			CIDEON-Jobserver	03.02.2025 17:11	Change LifecycleDefinition
00000671.jpg	Bodenplatte			CIDEON-Jobserver	03.02.2025 17:11	Add Attachment
00000671.dwg	Bodenplatte	-	In Bearbeitung	CIDEON-Jobserver	03.02.2025 17:10	Change Category
00000671.ipt	Bodenplatte	01	Freigegeben	CIDEON-Jobserver	17.12.2024 11:13	
Attachments						
00000671.stp	Bodenplatte		Erstellt	CIDEON-Jobserver	03.02.2025 17:11	Change LifecycleDefinition

Export formats in a drawing's where-used list

[Back to Overview](#)



## PDF Stamping/Watermarks



Examples of watermarking on a CAD drawing

### Clearly Mark Documents

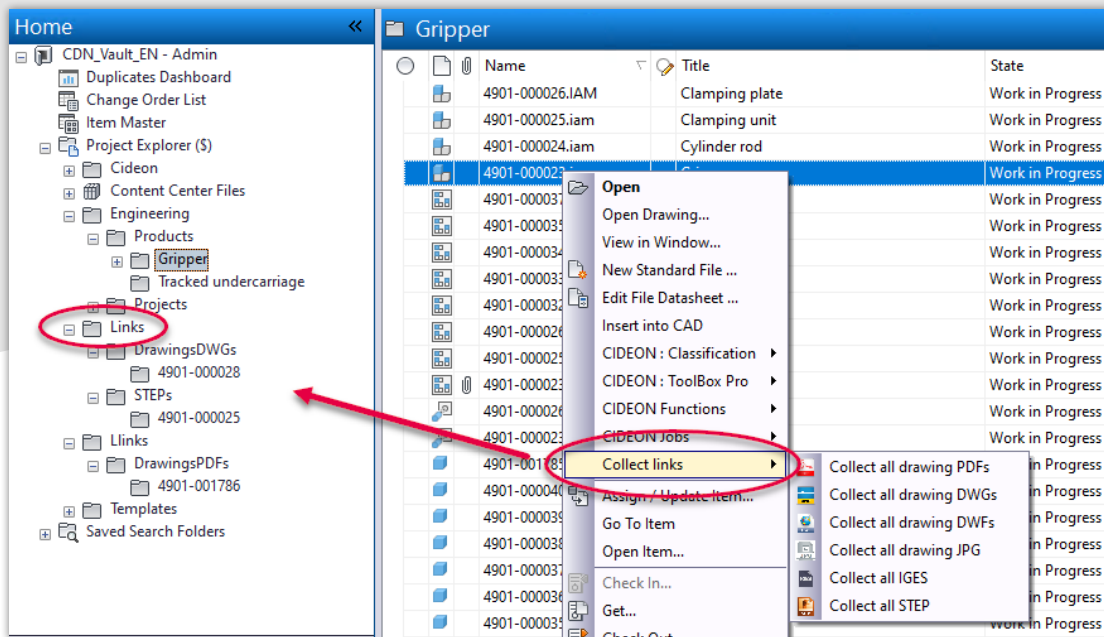
When changes are made to previously approved drawings, you want to ensure that users of the associated PDFs can clearly see that the underlying drawing is being revised. Our Watermark feature allows you to easily apply text to the PDF file.

This enhancement is fully integrated into your release process, with stamping applied based on status and at any configurable location.

Of course, PDF stamping can also be performed directly by the user via the menu function.

[Back to Overview](#)


## Collections



Function menu on an assembly for the collection of files

### Find Data Quickly

With the click of a button, you can collect all relevant file links for an assembly as links information in a flat list. This allows you to easily filter and search - something that is difficult to do in the tree structures of a Where-used record in Vault's standard functionality.

You have control over which formats are made available to the user and where these links are stored. All formats that can be pre-generated by a job are possible. For exchange formats, only files that already exist and were attached to the original document are collected.

### Examples of useful collections include:

- All drawings for an assembly
- All PDFs of drawings for an assembly
- All DXFs for the sheet metal parts of an assembly
- All parts of an assembly in a flat structure
- And much more

Individual documents that are not referenced in any other file ("orphaned documents") can also be collected using the extension.

[Back to Overview](#)

## Classification/List of Characteristics

### Klassifizierung

Klassifizierungsbaum

- Bolzen
- Halbzeige
- Beschläge
- Bleche
  - Knotenbleche
  - Laschen
    - gerade
    - gebogen
      - mit Langloch
      - mit Bohrung
      - mit Muster
- Winkel
- Motoren
- Behälter

#### Favoriten

Bleche / Laschen / gebogen / mit Bohrung

Klasse (1. Ebene)

Sachgebiet

Bleche

Klasse (2. Ebene)

Hauptgruppe

Laschen

Klasse (3. Ebene)

Gruppe

gebogen

Klasse (4. Ebene)

Untergruppe

mit Bohrung

#### Sachmerkmale

Blechstärke	2 mm	(1.Ebene)
Material	S235 JRG2	(1.Ebene)
Schenkellänge A	100 mm	(2.Ebene)
Schenkellänge B	125 mm	(2.Ebene)
Schenkelbreite	60 mm	(2.Ebene)
Winkel	90°	(3.Ebene)
Anzahl	2	(4.Ebene)

Copyright © CIDEON

Abbrechen

Speichern

Classification structure and characteristics dialog

### Create Order With a System

The List of Characteristics is a classification system that provides you with a customized hierarchical class tree.

The List of Characteristics gives you access to a high-quality, standardized tool for efficiently classifying and structuring your Vault documents and items.

For each class, you can define any number of attributes that are automatically inherited through the class hierarchy. Of course, you can also apply compliance checks as you enter properties, such as value ranges for numbers, case sensitivity, and more.



#### Benefits of a classification system in engineering

- Faster search and retrieval (e.g., individual parts within a class)
- Increased part reuse for efficient variant management
- Consistent classification according to the same criteria
- Greater savings potential (in terms of time and cost)

Back to Overview



Cideon Toolbox for Autodesk Vault

# Display Bill of Materials

History Uses Where Used Change Order View Bom File jobs CAD BOM Datasheet

Load Export ☒ Thumbnail

Model data Structured Only components

Name (fix)	Title	Thumb...	Anzahl (fix)	Stücklistenstruktur (fix)	Material	Bauteilnummer (fix)
4901-000023.iam	Gripper		0	Normal		100043
4901-000024.iam	Cylinder rod		2	Normal		100050
4901-000032.ipt	Piston rod		1	Normal	ALUMINUM - 6061	100058
4901-000025.iam	Clamping unit		2	Normal		100049
4901-000030.ipt	Plate		1	Normal	STEEL - MILD	100057
4901-000031.ipt	Grip pad		1	Normal	STEEL - HIGH	100056
ISO 4762 - M6 x 40ISO.ipt			2	Purchased		ISO 4762 - M6 x 40
ISO 7089 - 6 - 140 HV(1).ipt			2	Purchased		ISO 7089 - 6
4901-000026.IAM	Clamping plate		1	Normal		100048
4901-000040.ipt	Sheet metal		1	Normal	X155CrVMo12	100069
ISO 4762 - M6 x 16ISO.ipt			2	Purchased		ISO 4762 - M6 x 16
ISO 7089 - 6 - 140 HV(1).ipt			2	Purchased		ISO 7089 - 6

Structured representation of an Inventor assembly bill of material

Displaying the Bill of Materials in Vault

By default, Vault can only display the Inventor Bill of Materials using the item functionality available in Vault Professional if it has been manually derived from the assembly.

Do you want to continue managing item data in the ERP system while focusing on design activities in Vault? Creating a parallel database for master data is often undesirable and adds significant engineering overhead.

**We have the solution!** With this extension, we provide you with the CAD BOM directly as additional information

for the assembly, without the need to create item data. In the Vault's Bill of Materials tab, we present the exact Bill of Materials that the designer created in his assembly - complete with all the necessary information such as quantity, item number, and custom properties. This means that the Bill of Materials is updated when the assembly is checked into the Vault, so it is always up to date.

The big advantage is that it can be used by other Vault users who do not have a CAD workstation. In addition, you can customize the display and quickly export to the popular CSV format.

Back to Overview

# Attribute Inheritance

Project Explorer

Project Explorer (\$)

Cideon

Content Center Files

Engineering

Products

Projects

ACME Corporation

P-0815

CAD

Correspondence

Documentation

Neutral formats

Links

Templates

Saved Search Folders

CAD

Name	Title	State	Revision
CDN-000000.iam	Clamping unit	Work in Progress	00
CDN-000011.idw	Pisteon rod	Work in Progress	-
CDN-000010.idw		Work in Progress	-
CDN-000009.idw	Angle plate	Work in Progress	-
CDN-000008.idw	Clamping head	Work in Progress	-
CDN-000007.idw	Robots	Work in Progress	-
CDN-000006.idw	Plate	Work in Progress	A
CDN-000005.idw		Work in Progress	-
CDN-000003.idw		Work in Progress	-
CDN-000002.idw		Work in Progress	-
CDN-000005.ipn		Work in Progress	00
CDN-000002.ipn		Work in Progress	00

User Defined

Customer	ACME Corporation
Description	test part
Document Sub Type Name	Drawing Layout
Part Number	CDN-000006
Project	P-0815
Revision text	FIRST RELEASED
Title	Plate

Inheritance of folder attribute values (customer and project number) to file attributes in the folder

## Easy Data Maintenance

The extension for attribute inheritance allows you to transfer properties from folders to the files contained within them. For example, you only need to maintain a project description at the folder level, and this description will automatically be applied to all files located in that folder.

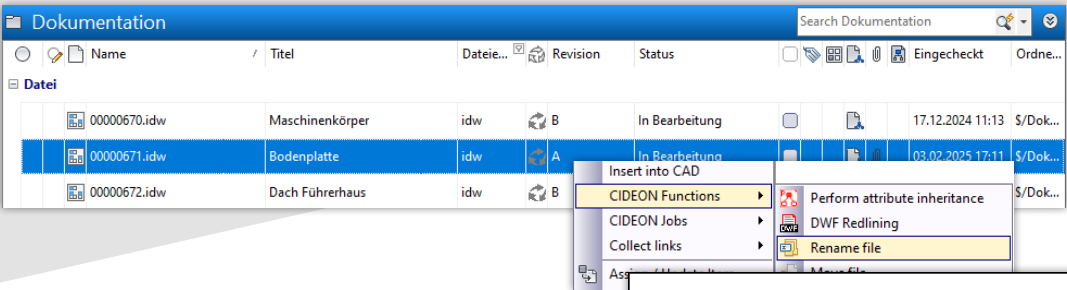
Of course, attribute inheritance can also be performed directly by the user at the file level through the menu function. A wide range of configuration options ensures that all your requirements are met.

Back to Overview



Cideon Toolbox for Autodesk Vault

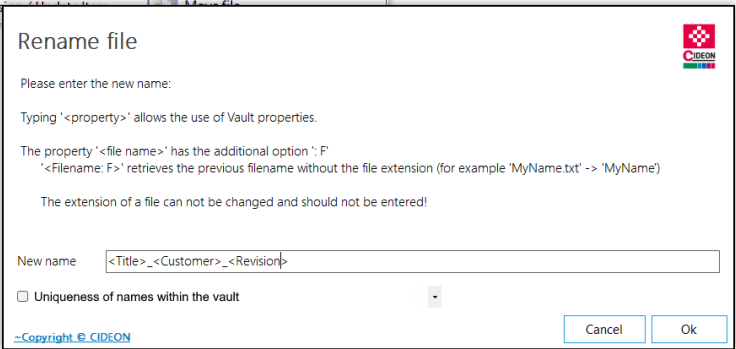
# Tools for Better File Handling



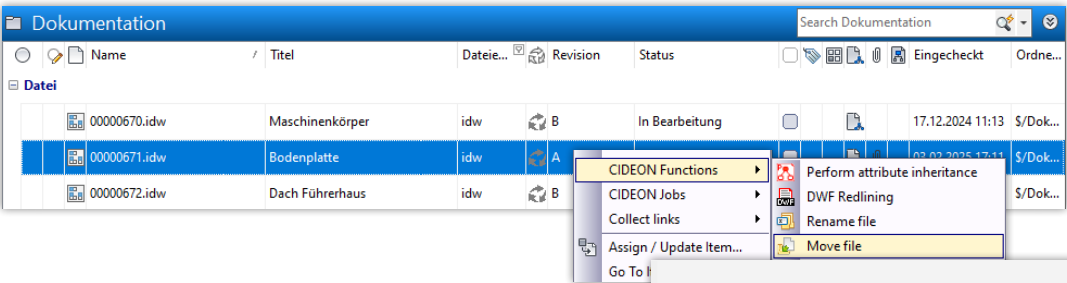
### Rename Folders/Files

Do you want to rename files or folders in Vault individually or in bulk? By default, Vault does not offer a "smart" numbering generator, e.g., to incorporate attribute values into the file names.

With this extension, you have the ability to access any properties of a file or folder and integrate this information as part of the new name.

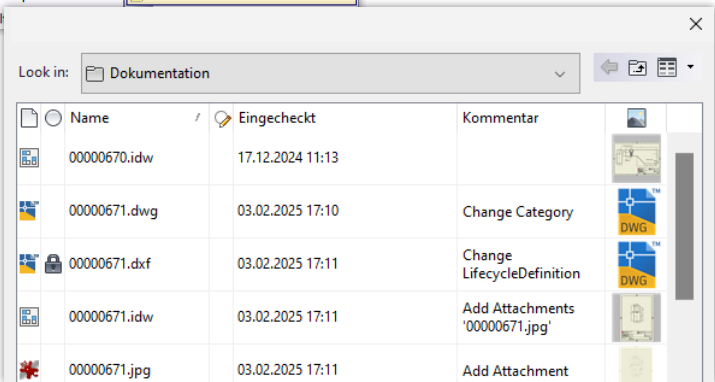


Renaming a file with dialog and naming scheme based on fields



### Move Folders/Files

In Vault, you cannot search for files across folders or move them in bulk by default. Our extension enables the efficient movement of files and folders, regardless of where these files and folders are originally located.



Moving of files to a target folder

[Back to Overview](#)

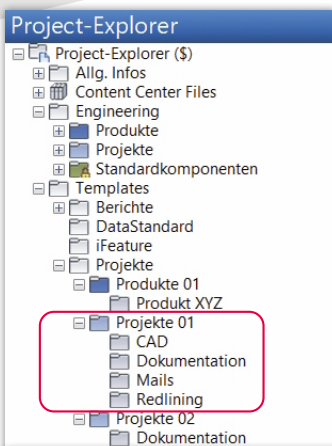




## Template Folders

### Create Structures

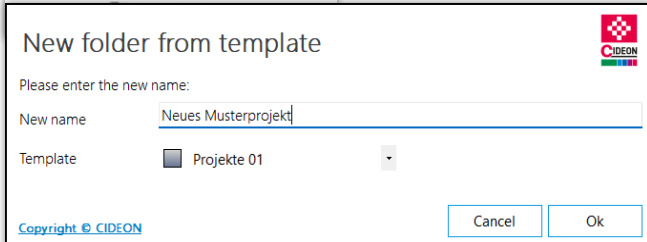
Template Folders is the ideal extension for duplicating standard structures (e.g., custom project structures) and saving a significant amount of time. You define a template structure that will be used as a basis for new projects. This includes category-specific template structures and copies files that are stored in the template folders, optionally including security settings and/or predefined property values.



Project-Explorer

- Project-Explorer (\$)
- Allg. Infos
- Content Center Files
- Engineering
  - Produkte
  - Projekte
  - Standardkomponenten
- Templates
  - Berichte
  - DataStandard
  - iFeature
  - Projekte
    - Produkte 01
    - Produkt XYZ
    - Projekte 01
      - CAD
      - Dokumentation
      - Mails
      - Redlining
    - Projekte 02
    - Dokumentation

Easy selection of a template folders structure by category when creating a new project

New folder from template

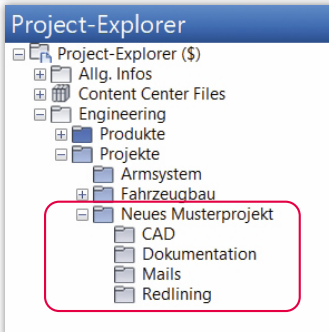
Please enter the new name:

New name: Neues Musterprojekt

Template: Projekte 01

Cancel Ok

Copyright © CIDEON

Project-Explorer

- Project-Explorer (\$)
- Allg. Infos
- Content Center Files
- Engineering
  - Produkte
  - Projekte
  - Armsystem
  - Fahrzeugbau
    - Neues Musterprojekt
      - CAD
      - Dokumentation
      - Mails
      - Redlining

### Cideon Add-Ons:

#### Automation, Optimization, Integration

In addition to developing engineering products, Cideon creates a variety of extensions to implement custom requirements in the CAD and PDM/PLM environments.

The Cideon tools are user-friendly add-ons with extensive functionality that enable optimized processes for documents, parts, bill of materials, and change management. Furthermore, they can be easily and quickly integrated into existing solutions.

### Requirements

- Autodesk Vault Professional (the current version and up to three previous versions)
- The automated functions through the Vault job processor require a suitably equipped workstation (Vault Client license, additional application depending on desired functionality).

[Back to Overview](#)

**CIDEON Software & Services GmbH & Co. KG**

Lochhamer Schlag 11 · D-82166 Gräfelfing

Phone +49 (0) 89 909003-0 · Fax +49 (0) 89 909003-250

info@cideon.com · www.cideon.com

PROCESS CONSULTING

ENGINEERING SOFTWARE

IMPLEMENTATION

GLOBAL SUPPORT

FRIEDHELM LOH GROUP

