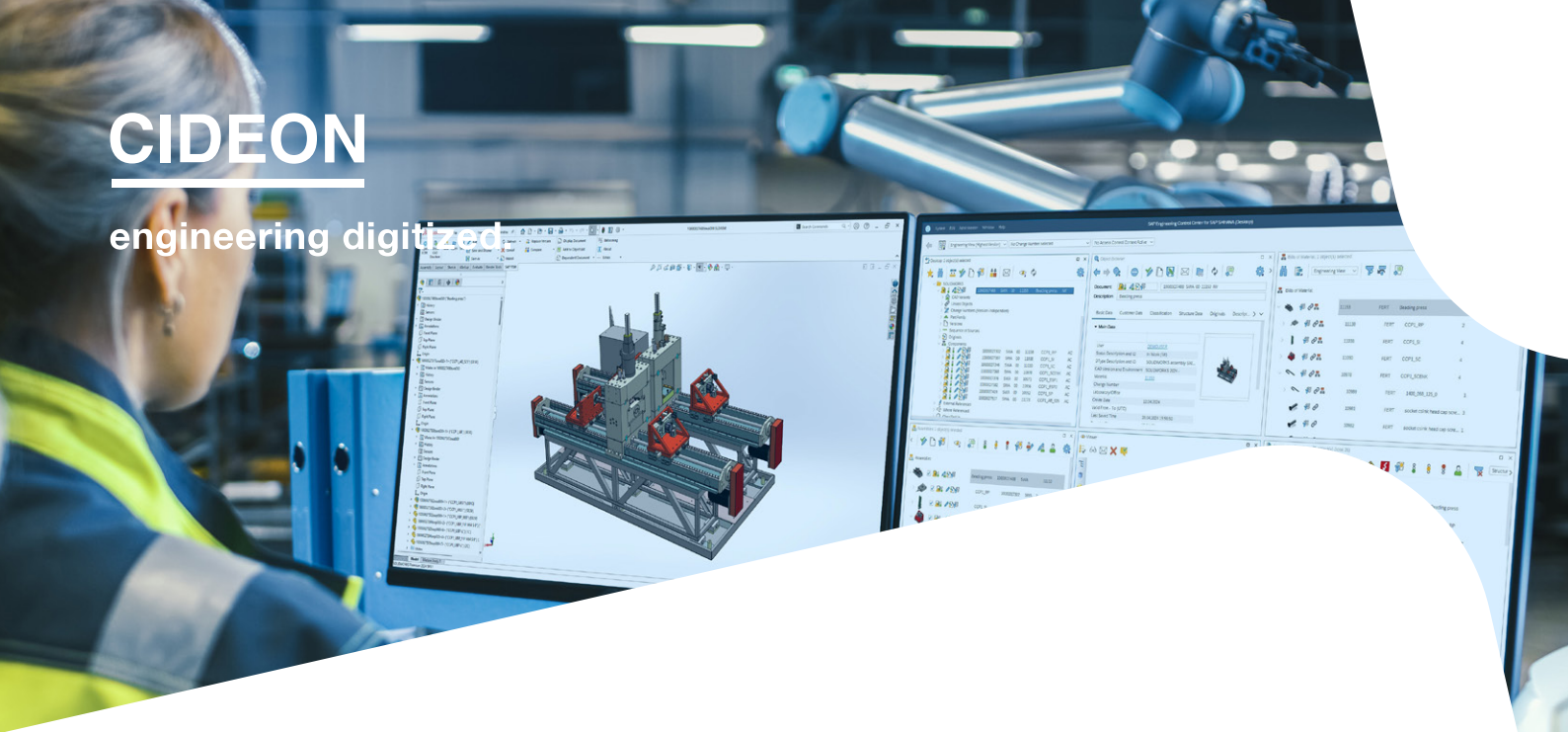


# CIDEON

engineering digitized



Cideon – engineering digitized.

## SAP Engineering Control Center interface to SOLIDWORKS

### Interdepartmental Communication Made Easy

This is where SAP SE makes life easier for customers. It enables the consistent management of data from mechanical engineering, electronics, software development and simulation to be consistently managed within each discipline's own PLM system and within an efficient working environment – the SAP Engineering Control Center (ECTR).

With SAP ECTR, all possibilities for digital transformation, the digital twin and IoT are open. This is because the critical design and product data is available in real time – at every stage of the product development process.

**Your benefits:** Accelerated and closed-loop process workflows enable you to develop competitive standardized products, shorten innovation cycles and achieve higher product quality.



### Highlights

- Centralized integration platform
- Ideal interface for SOLIDWORKS users, with a familiar look and feel
- Single user interface even when using multiple CAD systems simultaneously
- No relevant knowledge or extensive training required
- Easy to use even for new users
- Quick and easy access to centralized information, data and objects

**Cideon develops the SAP Engineering Control Center interface to SOLIDWORKS exclusively for SAP SE.**



PROCESS CONSULTING

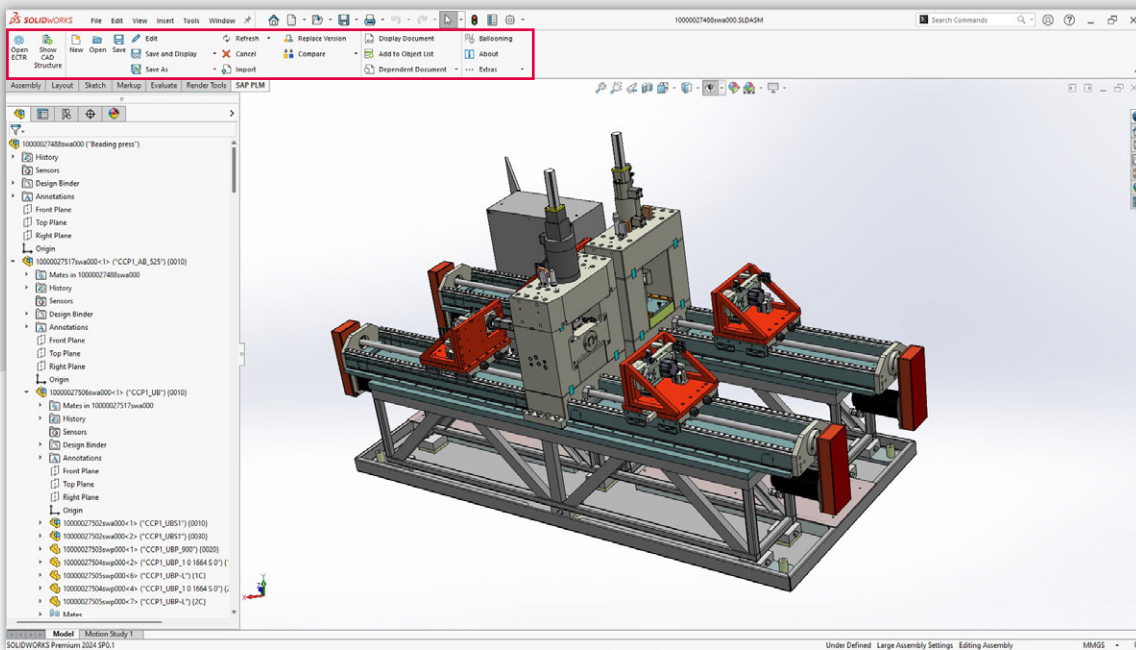
ENGINEERING SOFTWARE

IMPLEMENTATION

GLOBAL SUPPORT

FRIEDHELM LOH GROUP

# SOLIDWORKS Product Data – Perfectly Integrated



The integrated SAP ECTR ribbon menu in SOLIDWORKS

## The best working environment for engineers

Designed by engineers for engineers, SAP ECTR's interface to SOLIDWORKS provides designers with an optimal working environment.

SOLIDWORKS users can perform their tasks in familiar work environments and load related original files for editing or viewing directly from SAP via the integrated SAP ECTR ribbon menu.

Easy mapping of SAP materials to SOLIDWORKS assembly structures and automatic derivation of multi-level SAP bill of materials (BOMs) ensure consistent data structures for all development personnel.

All authorized users have access to the original files, which are stored in a central, secure repository ("Single Source of Truth"). This enables them to monitor the ongoing progress of development and make changes themselves using SAP Engineering Change Management.

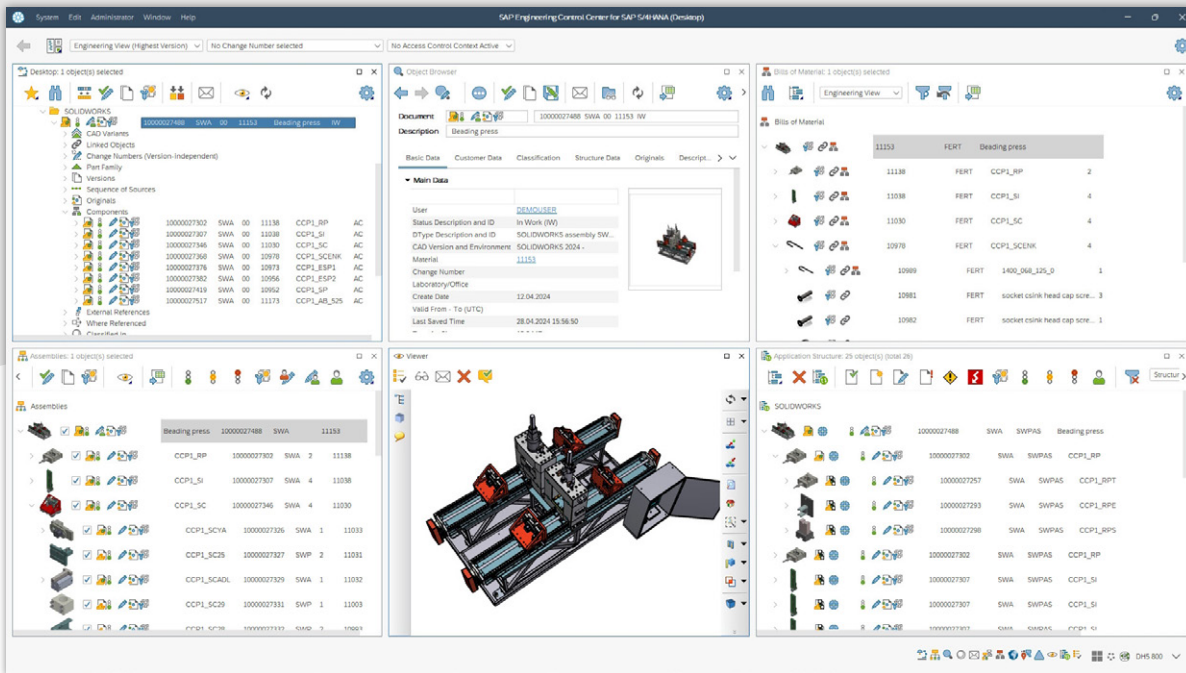
Automated bi-directional metadata exchange eliminates unnecessary manual data entry, freeing designers to focus on value-added tasks.



### Cideon Add-ons: Automation, Optimization, Integration

In addition to engineering standard solutions, Cideon develops numerous add-ons to implement specific customer requirements in SAP ERP/PLM. Cideon Add-ons are easy-to-use tools with extensive functionality that enable optimized processes for common work steps in SAP Document, Material, BOM- and Change Management, and they can be easily integrated into SAP ECTR.

# SAP Engineering Control Center



The SAP ECTR user interface

## Promote a Collaborative Product Network

SAP ECTR is the ideal enabler for both concurrent and systems engineering as well as for mechatronics, providing a holistic view of all product information. Smooth transitions between processes are always ensured by the availability of up-to-date and consistent product data throughout the enterprise.

Changes in design and production processes can be tracked using the integrated SAP Engineering Change Management, increasing transparency. Product-related processes can be easily linked and optimized throughout.

By converting native CAD data into neutral visualization data, all users, even those without CAD software, can access the information by using the integrated SAP 3D Visual Enterprise Viewer.

This powerful solution enables visual communication across the enterprise, from engineering and manufacturing to sales and service.

## Simplify Engineering Work

The SAP ECTR interface is similar to Windows® Explorer, making it easy to work with any CAD or Office source. Simple, intuitive data navigation provides a detailed overview of all required information such as documents, materials, BOMs and other SAP objects.

Users can customize and position windows and view data in personal folders. Context-sensitive, customizable drop-down menus and color-coded icons (e.g., approval status) provide an overview of tasks to be completed. Copy-and-paste and drag-and-drop functions simplify the structured editing of product details. Users also have access to an integrated help system.

## Overview of Features

### SAP Document Management System (DMS)

#### Cideon supports you in using the SAP DMS by:

- Creation and update SAP documents
- Import of complete SOLIDWORKS structures
- Automatic derivation and update of SAP document structures from SOLIDWORKS assemblies
- Management of SOLIDWORKS configurations
- Comprehensive version control including digital signature and integrated SAP change management
- Cloning of complete assembly structures
- Check-in/Check-out of all original and additional files with edit lock for checked-out documents
- Automatic generation of preview images
- SAP Content Server for all SOLIDWORKS files and other design formats

### Search Functions

- Google®-like search with QuickSearch
- Search by matchcodes, object links, where-used lists, classifications, queries and in folder structures, assemblies, BOMs
- Visual search support
- Search results with preview or as a list with Excel®-style filtering in all columns

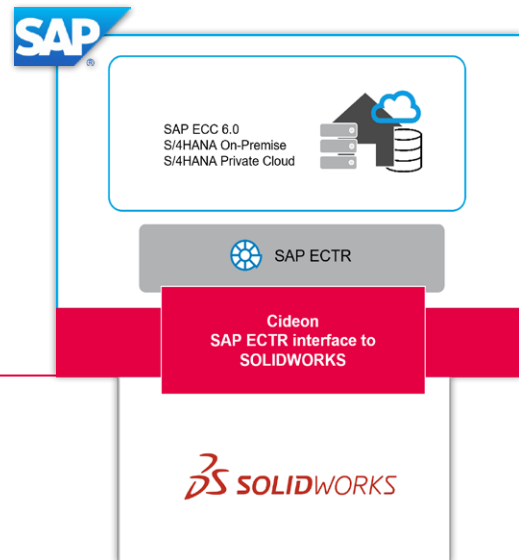
### SAP Material and SAP BOM Management

- Automatically create SAP material masters with information from SOLIDWORKS, such as file properties and physical model properties
- Automatically link parts to SAP documents
- Automatically derive SAP BOMs from SOLIDWORKS assembly structures



### SAP ECTR connects SOLIDWORKS to SAP

Manage your SOLIDWORKS assemblies, parts and drawings seamlessly in SAP with Cideon's integration between SAP ECTR and SOLIDWORKS.

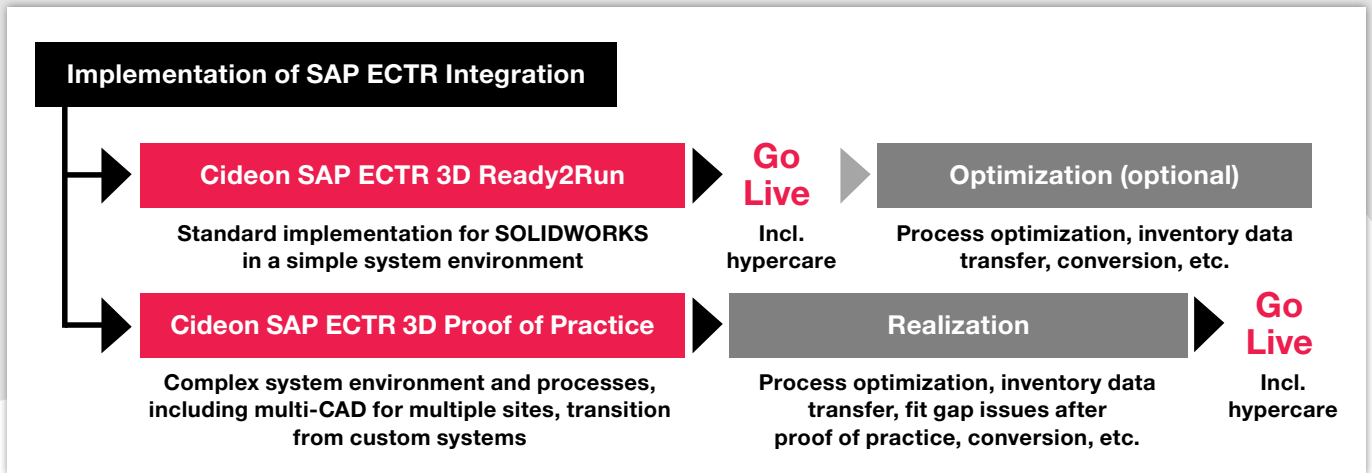


### System Requirements

- SAP Engineering Control Center 5.2.6x, 5.2.7x S/4 1.1.5.x, S/4 1.1.6.x, S/4 1.2.0.x
- SAP ECC 6.0 from EhP 7 or SAP S/4HANA (On-Premise oder Private Cloud)
- SOLIDWORKS/SOLIDWORKS Electrical 2024, 2023, 2022
- Windows 10/11 (64 bit)



## Cideon Implementation Packages



Cideon Implementation Packages - Professional and coordinated support for your project team

### Get the Benefits of SAP ECTR Quickly and Easily

You want to take advantage of direct integration between Inventor and SAP PLM as soon as possible, but you are afraid of complex IT projects?

With our service packages, we make the implementation of the SAP ECTR interface to SOLIDWORKS as easy as possible for you, without consuming your valuable time and limited resources with excessive project scopes. Even if you have a complex system landscape and want to integrate additional CAD systems, you are in good hands with us.

With a thorough analysis of your individual requirements, implementation based on best practices, well thought-out training concepts and other attractive services, we set the stage for fast and successful work with SAP ECTR interfaces.

### We offer our professional support for the implementation of SAP ECTR interfaces through two standardized service packages:

#### Cideon SAP ECTR 3D Ready2Run

- Installation of a standardized test environment:
  - Configuration in SAP (Business Configuration Set)
  - Installation and configuration SAP ECTR
- Key user training
- Support during the test phase
- Implementation of "small" system optimizations
- Initial inventory data review
- Go Live support incl. hypercare

#### Cideon SAP ECTR 3D Proof of Practice

- Installation of a standardized test environment:
  - Configuration in SAP (Business Configuration Set)
  - Installation and configuration SAP ECTR
- Key user training
- Support during the test phase
- Implementation of import workshops (high level)
- Fit gap analysis
- Budget estimation for implementation project incl. description

**CIDEON Software & Services GmbH & Co. KG**  
 Lochhamer Schlag 11 · D-82166 Gräfelfing  
 Phone +49 (0) 89 909003-0 · Fax +49 (0) 89 909003-250  
 info@cideon.com · www.cideon.com

