

# CIDEON

engineering digitized.

Cideon – engineering digitized.

## SAP Engineering Control Center interface to Eplan

### Interdepartmental Communication Made Easy

This is where SAP SE makes life easier for customers. It enables the consistent management of data from mechanical engineering, electronics, software development and simulation to be consistently managed within each discipline's own PLM system and within an efficient working environment – the SAP Engineering Control Center (ECTR).

With SAP ECTR, all possibilities for digital transformation, the digital twin and IoT are open. This is because the critical design and product data is available in real time – at every stage of the product development process.

**Your benefits:** Accelerated and closed-loop process workflows enable you to develop competitive standardized products, shorten innovation cycles and achieve higher product quality.



### Highlights

- Centralized integration platform
- Ideal interface for Eplan users, with a familiar look and feel
- Single user interface even when using multiple CAD systems simultaneously
- No relevant knowledge or extensive training required
- Easy to use even for new users
- Quick and easy access to centralized information, data and objects

**Cideon develops the SAP Engineering Control Center interface to Eplan exclusively for SAP SE.**



PROCESS CONSULTING

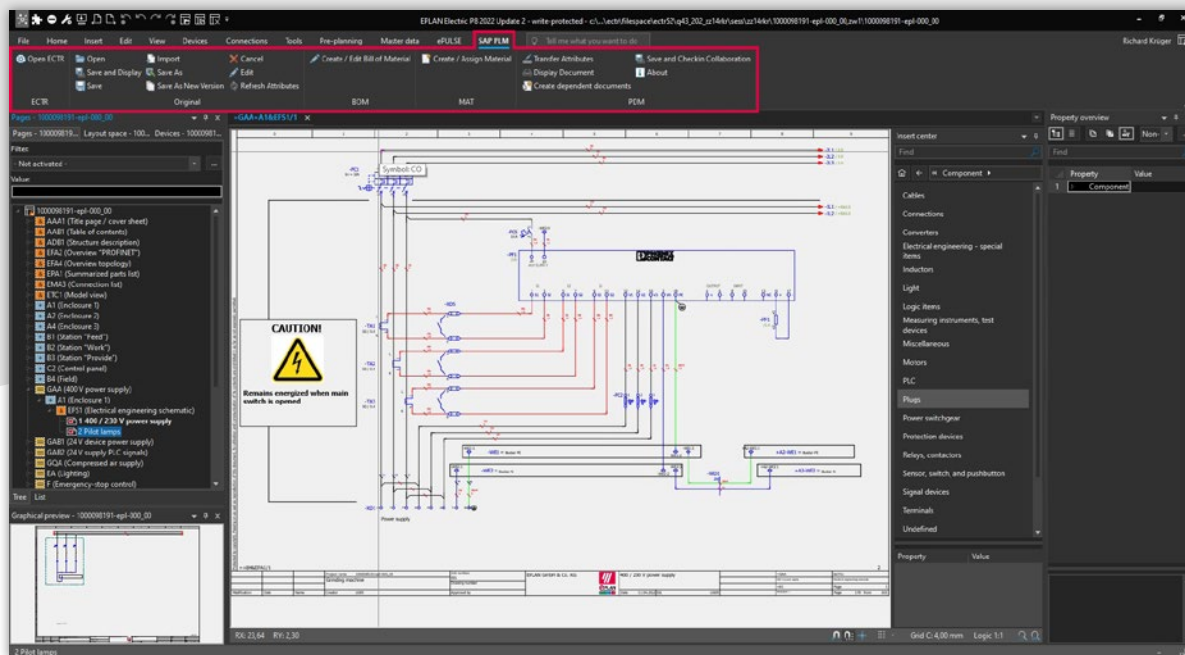
ENGINEERING SOFTWARE

IMPLEMENTATION

GLOBAL SUPPORT

FRIEDHELM LOH GROUP

## Eplan Product Data – Perfectly Integrated



The integrated SAP ECTR ribbon menu in Eplan

### The best working environment for engineers

Designed by engineers for engineers, SAP ECTR's interface to Eplan provides designers with an optimal working environment.

Eplan users can perform their tasks in familiar work environments and load related original files for editing or viewing directly from SAP via the integrated SAP ECTR ribbon menu.

Easy mapping of SAP materials to Eplan projects and parts and automatic derivation of multi-level SAP bill of materials (BOMs) ensure consistent data structures for all development personnel.

All authorized users have access to the original files, which are stored in a central, secure repository ("Single Source of Truth"). This enables them to monitor the ongoing progress of development and make changes themselves using SAP Engineering Change Management.

Automated bi-directional metadata exchange eliminates unnecessary manual data entry, freeing designers to focus on value-added tasks.

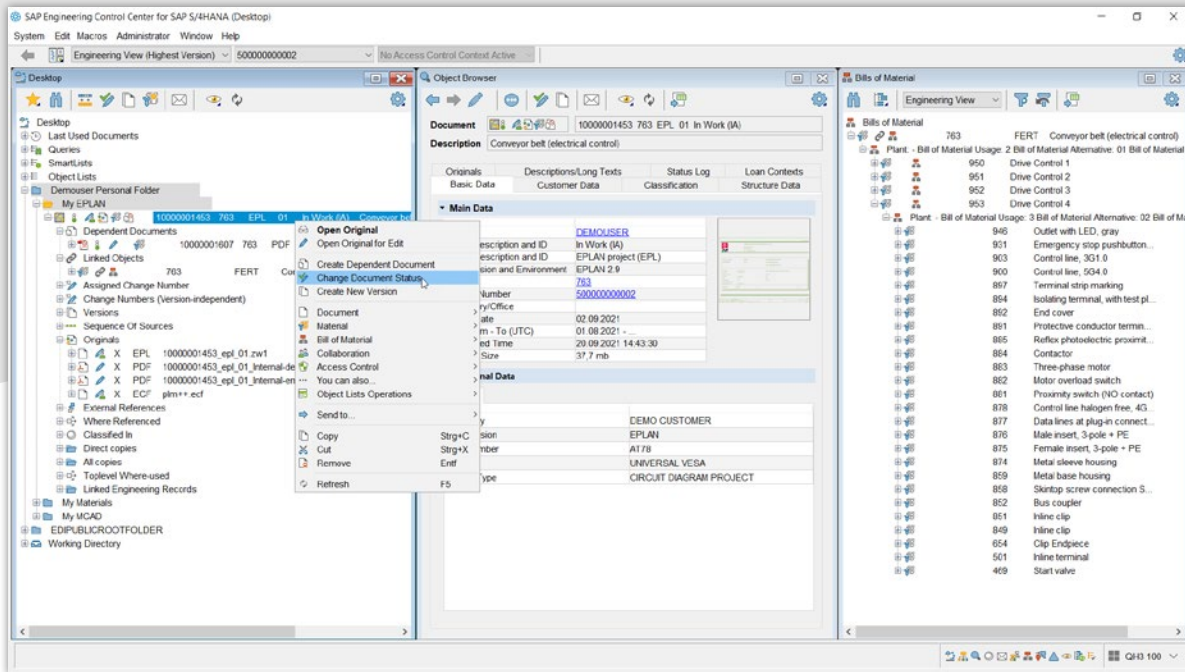


### Cideon Add-ons: Automation, Optimization, Integration

In addition to engineering standard solutions, Cideon develops numerous add-ons to implement specific customer requirements in SAP ERP/PLM. Cideon Add-ons are easy-to-use tools with extensive functionality that enable optimized processes for common work steps in SAP Document, Material, BOM- and Change Management, and they can be easily integrated into SAP ECTR.

# SAP Engineering Control Center interface to Eplan

## SAP Engineering Control Center



The SAP ECTR user interface

### Promote a Collaborative Product Network

SAP ECTR is the ideal enabler for both concurrent and systems engineering as well as for mechatronics, providing a holistic view of all product information. Smooth transitions between processes are always ensured by the availability of up-to-date and consistent product data throughout the enterprise.

Changes in design and production processes can be tracked using the integrated SAP Engineering Change Management, increasing transparency. Product-related processes can be easily linked and optimized throughout.

By converting native CAD data into neutral visualization data, all users, even those without CAD software, can access the information by using the integrated SAP 3D Visual Enterprise Viewer.

This powerful solution enables visual communication across the enterprise, from engineering and manufacturing to sales and service.

### Simplify Engineering Work

The SAP ECTR interface is similar to Windows® Explorer, making it easy to work with any CAD or Office source. Simple, intuitive data navigation provides a detailed overview of all required information such as documents, materials, BOMs and other SAP objects.

Users can customize and position windows and view data in personal folders. Context-sensitive, customizable drop-down menus and color-coded icons (e.g., approval status) provide an overview of tasks to be completed. Copy-and-paste and drag-and-drop functions simplify the structured editing of product details. Users also have access to an integrated help system.

## Overview of Features

### SAP Document Management System (DMS)

#### Cideon supports you in using the SAP DMS by:

- Creation/update of SAP Document Info Records (DIR) for Eplan projects
- Import of project files to SAP
- Use of templates
- Open, edit, save and display of projects
- Automatic/manual generation of dependent documents, e.g. export PDF as further original or separate DIR
- Support of the Eplan Multiuser operation
- Export of further formats (DXF, JPG,...)
- Check-in/Check-out of all originals and dependent documents with edit-locking for checked-out SAP DIRs
- Bidirectional exchange of project header properties with SAP DIR meta data and/or attributes of SAP document-classification
- Version project or save as new SAP DIR
- Comprehensive SAP release and change management including digital signature
- Storage of all Eplan files in the SAP Content Server

### Search functions

- Google®-type searching using QuickSearch
- Search by match codes, object links, where-used lists, classification, queries and in folder structures, assemblies, BOMs
- Visual search support
- Search results with preview or as a list with Excel®-style filtering in all columns

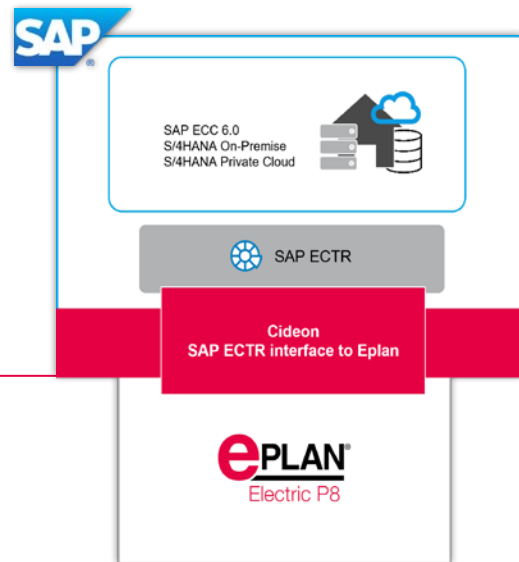
### SAP Material and Bill of Materials Management

- Create and/or assign an SAP material master (MAT) to the SAP DIS of the Eplan project
- Create and/or assign a SAP MAT to Eplan parts
- Automatic derivation of simple/structured SAP bill of materials (BOMs) from Eplan structures



### SAP ECTR connects Eplan to SAP

Manage your Eplan projects and parts seamlessly in SAP with Cideon's integration between SAP ECTR and Eplan

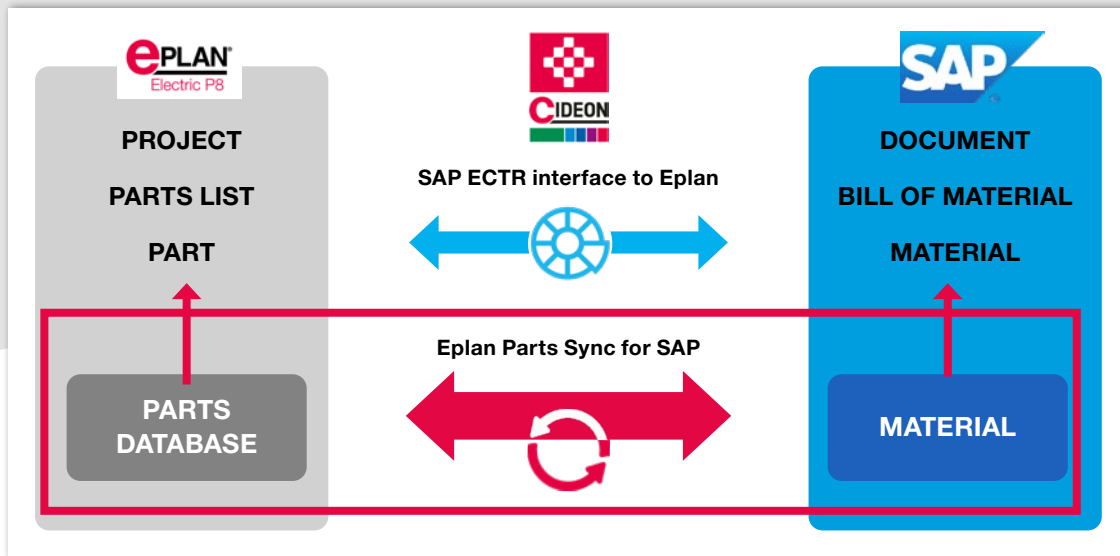


For the automatic synchronization of the parts managed in the Eplan parts database and the corresponding SAP material masters, we offer the Cideon Eplan Synchronizer for SAP as an additional product.

### System requirements

- SAP Engineering Control Center 5.2.5.x/5.2.5.6.x, S/4 1.1.5.x/, S/4 1.1.6.x, S/4 1.2.0.x
- SAP ECC 6.0, from EhP 7 or SAP S/4HANA (On-Premise oder Private Cloud)
- Eplan P8, current release and first previous version
- Eplan ERP-PDM Integration Suite (EPIS), current release and first previous version
- Windows 10/11 (64 bit)

## Simple Parts/Materials Management



Cideon Eplan Parts Sync for SAP is available as an additional Cideon product

With the SAP ECTR interface to Eplan, Eplan projects are initially managed as documents in SAP as standard. At the same time, SAP material numbers can be created directly for Eplan parts or existing SAP Material Masters can be assigned with a mouse click. The material number is then automatically entered in the Eplan parts database in the "ERP number" field of the respective part.

A mandatory prerequisite for the transfer of Eplan part lists to SAP bill of materials (BOM) is the presence of the ERP number, that means an existing SAP material number in the properties of both the structuring elements (e.g. Eplan groups) as well as all the parts used in the Eplan project.

The process of creating the SAP materials or assigning them to the individual parts can be easily performed with SAP ECTR interface to Eplan, but it is a one-time process. Once this process is completed, no further data is exchanged. But what about changes to Eplan parts or SAP materials and maintaining data consistency in both systems?

**We have the solution for you!**

### Process Automation of Parallel Databases

To increase process reliability, it makes sense to establish a permanent, bidirectional comparison between the Eplan parts database and the SAP Material management system.

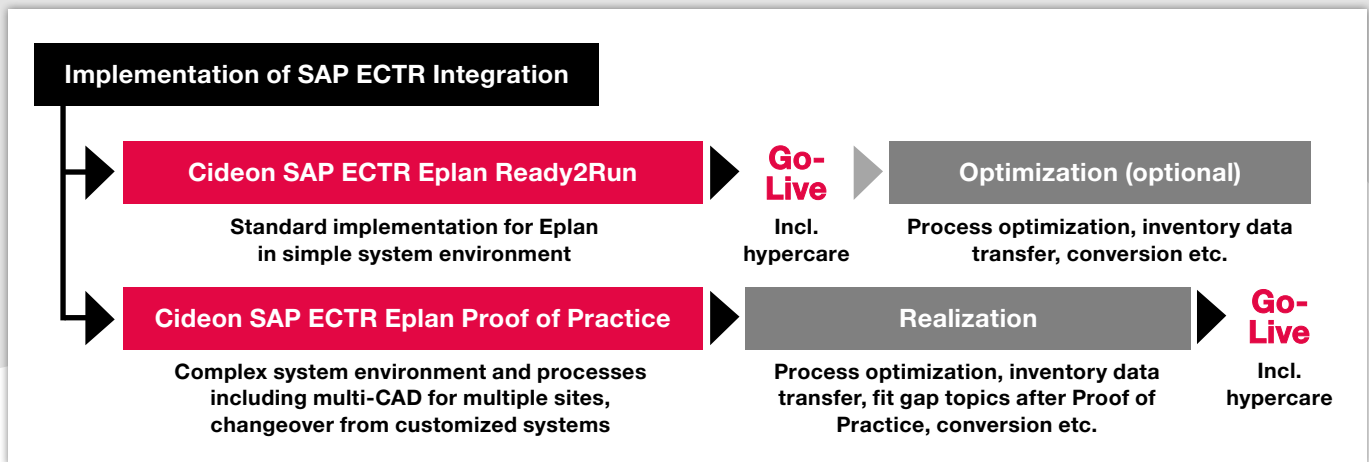
This is where Cideon Eplan Parts Sync for SAP comes into play. Our product enables to keep the data from the Eplan parts database synchronized with the assigned SAP materials on the basis of a set of rules that can be adapted to customer-specific requirements. The synchronization takes place in the form of a background process that is started by a definable event. This is either a point in time or a change pointer, i.e. a change to a data master is automatically recognized and executed.



**Cideon Eplan Parts Sync can be used in addition to SAP ECTR interface to Eplan or independently of it.**



## Cideon Implementation Packages



Cideon Implementation Packages - Professional and coordinated support for your project team

### Get the Benefits of SAP ECTR Quickly and Easily

You want to take advantage of direct integration between Eplan and SAP PLM as soon as possible, but you are afraid of complex IT projects?

With our service packages, we make the implementation of the SAP ECTR interface to Eplan as easy as possible for you, without consuming your valuable time and limited resources with excessive project scopes. Even if you have a complex system landscape and want to integrate additional CAD systems, you are in good hands with us.

With a thorough analysis of your individual requirements, implementation based on best practices, well thought-out training concepts and other attractive services, we set the stage for fast and successful work with SAP ECTR interfaces.

We offer our professional support for the implementation of SAP ECTR interfaces through two standardized service packages:

#### Cideon SAP ECTR Eplan Ready2Run

- Installation of a standardized test environment:
  - Configuration in SAP (Business Configuration Set)
  - Installation and configuration SAP ECTR
- Key user training
- Support during the test phase
- Implementation of "small" system optimizations
- Initial inventory data review
- Go Live support incl. hypercare

#### Cideon SAP ECTR 3D Proof of Practice

- Installation of a standardized test environment:
  - Configuration in SAP (Business Configuration Set)
  - Installation and configuration SAP ECTR
- Key user training
- Support during the test phase
- Fit gap analysis
- Budget estimation for implementation project incl. description

#### CIDEON Software & Services GmbH & Co. KG

Lochhamer Schlag 11 · D-82166 Gräfelfing  
Phone +49 (0) 89 909003-0 · Fax +49 (0) 89 909003-250  
info@cideon.com · www.cideon.com