

# CIDEON

engineering digitized.

Cideon – engineering digitized.

## Cideon SAP ECTR Add-Ons

### Automation, Optimization, Integration

These are best practice-based examples that have emerged from a general need, and then developed together by customers and experienced consultants – with our SAP® Engineering Control Center (ECTR) Add-Ons you raise acceptance by users and also the quality of your data and processes: quickly and for the long term.

The savings potential from more efficient and shorter development and project times is enormous. This enables you to achieve optimized processes for almost all standard work steps in SAP Document, Material, BOM and Change Management. The Cideon SAP ECTR Add-Ons are based on your existing SAP ERP/PLM infrastructure and can be effortlessly implemented unmodified into your SAP system. Settings are made according to individual requirements. All required databases and practical interfaces for users as well as for administrators are, of course, included. Specific customer creations or adaptations enable simple options for enhancements to make Cideon software solutions extremely flexible.



### Highlights

- Improved integration of all departments involved in product development
- Routine work procedures made significantly easier
- Shorter development and project times
- Greater data and process transparency
- Easier decision making
- Increased innovation from technology transfer
- Lower costs and improved quality

Cideon SAP ECTR Enhancement Suite

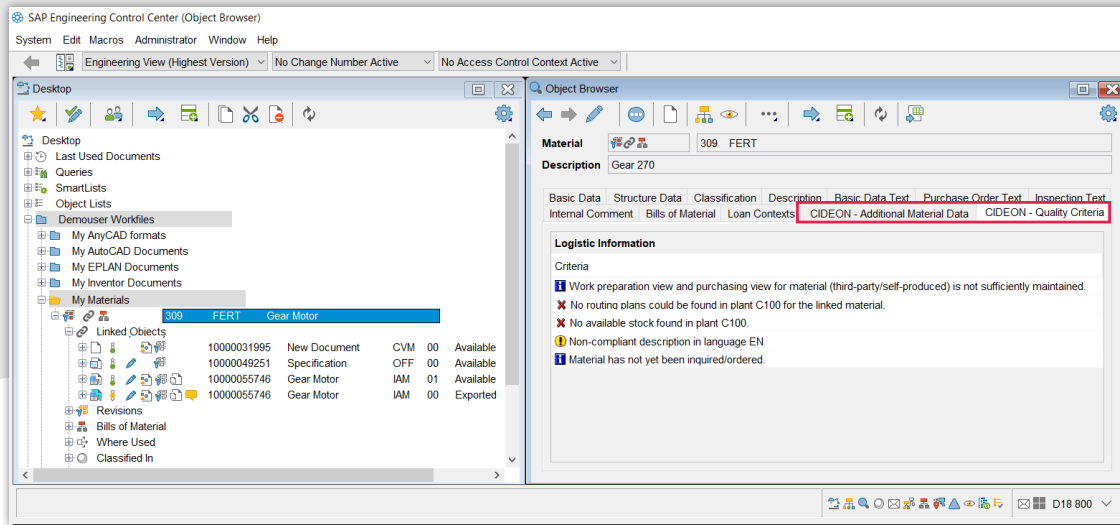
Cideon CDESK2ECTR Parallel Operation Toolset

The following project-specific Add-Ons can supplement your processes:

Cideon SAP ECTR Data Enrichment Toolsets

Cideon Part Name Rules Add-On

# Cideon SAP ECTR Enhancement Suite



Additional tabs in the SAP ECTR Object Browser with collected information on a selected SAP Material Master

## Key SAP Information at a Glance

The Cideon SAP ECTR Enhancement Suite extends the standard SAP ECTR Object Browser with individual tabs or (with the Cideon ECTR Context Windows Add-On) new windows with user definable content. The Add-On also offers many options to improve work and check routines.

This Add-On here also gives users the freedom to make function calls. In addition to SAP standard modules, activating other Cideon SAP Add-Ons is possible as well as the execution of customer-specific function modules or those of third-party providers.

## Display Options

- Additional, SAP object-sensitive tabs in the SAP ECTR Object Browser (e.g. for document, material, equipment etc.)
- Tab for customer ("Z") objects
- Extended table view with customizable column headers
- Tree structure view with expandable nodes
- Display of information and quality criteria with definable icons and labels
- Combinable detail views
- Group/user dependent view

## Advantages



- Clarity
- User-friendly
- Flexible configuration
- Increases efficiency
- Saves time

## Functions

- Customizable, object-dependent pop-up menus for direct execution of actions
- Drag & drop of objects (from the tree structure) into other SAP ECTR windows
- Instant layout modification

## System Requirements

- SAP Engineering Control Center 5.2/1.1
- SAP ECC 6.0 from EhP 7 or SAP S4/HANA

[Back to Overview](#)

# Cideon CDESK2ECTR Parallel Operation Toolset

## SAP PLM Interface Update Made to Measure

In the case of a normally recommended, complete changeover to the SAP ECTR, there are a number of challenges, including capacity constraints, existing independent CAD systems and distributed locations with different changeover requirements.

## The Cideon Solution

In addition to the extensive experience of our consultants from many changeover projects, we now also offer technical support for parallel operation of SAP CAD Desktop (CDESK) and SAP ECTR. With our solution, you can react flexibly to the coexistent use of both SAP integration interfaces. This frees you from a Big Bang changeover scenario and thus reduces the workload of your employees.

### The Cideon Parallel Operation Toolkit enables the CDESK integrations to provide the required information in a SAP ECTR compliant manner:

- Instance information on the installed components
- Transformation matrices and bounding boxes for the Digital Mock-Up Viewing (DMU-Viewing) of CAD assemblies
- Assign Dtypes and update the SAP ECTR tables (1:1 assignment between Dtype and SAP Document type)
- Extend SAP CDESK to manage non-master/master drawings of the SAP ECTR and vice versa to enable the SAP ECTR to manage CDESK drawings



## Our Workshops for Your Perfect Switch

Cideon offers professional support for the changeover from your SAP CAD Desktop to the SAP Engineering Control Center or for parallel operation of both interfaces. For the best possible recommendation for action, we offer our workshops adapted to your CAD integration landscape.

**We will be happy to advise you.**

## System Requirements

- The SAP CDESK direct integration must be up-to-date, both the Cideon CAD Interface RDP package in SAP and the SAP PLM Interface in the CAD system
- The SAP ECTR must be installed and configured in SAP
- For existing SAP CAD Desktop documents that are to be used, data enrichment must be carried out in advance (at least package 1 of the Cideon data enrichment toolsets).

[Back to Overview](#)

# Cideon SAP ECTR Data Enrichment Toolsets



**Available as Additional  
Consulting Service**

## Different Management Approaches

Both CDESK and SAP ECTR use the SAP Document Management System (DMS) as a basis for CAD data management. However, there are significant differences in the underlying technology.

The SAP ECTR has the approach that all information needed in subsequent processes is transferred to SAP when the CAD files are stored.

This means that no access to the CAD system is necessary for the subsequent processes and thereby SAP ECTR requires a range of additional CAD-specific supplementary information. Furthermore, SAP ECTR categorizes documents with the help of so-called "Dtypes".

For drawing management, the SAP ECTR knows two different types of drawings: master and non-master drawings. The difference between the two drawing variants is how strongly the drawing is bound to the model. A master drawing is an independent document that can be created, versioned or copied independently of the model. A non-master drawing is a drawing that is dependent on the 3D model. On the other hand, the non-master drawing concept cannot be realized with the SAP CAD Desktop. Therefore, CAD inventory data in SAP must be enriched with additional information in order to support the extended SAP ECTR functions.

This includes, among others:

- Extended control of master/non-master assignment
- Determination of configuration data (SOLIDWORKS)
- Transfer of SAP Material links to CAD variants
- Generation of instance information
- Transformation matrices for 3D viewing in SAP ECTR
- Indicator for BOM relevance
- Matching CAD file properties with SAP fields
- Provision of information for BOM derivation

## The Cideon SAP ECTR Data Enrichment Toolsets are available in three packages:

### Package 1

- Dtype assignment and filling of mandatory tables with necessary tables with standard reports  
(see also SAP Note 2117843)

### Package 2

- Prepare standard parts and drawings for SAP ECTR
- Transfer tables and master/non-master reference

### Package 3\*

- Enrichment of further information of the tables relevant in the SAP ECTR. The information can only be determined by opening the native CAD document (e.g. SOLIDWORKS configurations, Solid Edge instance information, etc.) (also see SAP Note 2648617)

\*) Mandatory for SOLIDWORKS,. Necessity for the other CAD systems the necessity must be determined for each project. The Cideon Conversion Engine Framework is a prerequisite.

## System Requirements

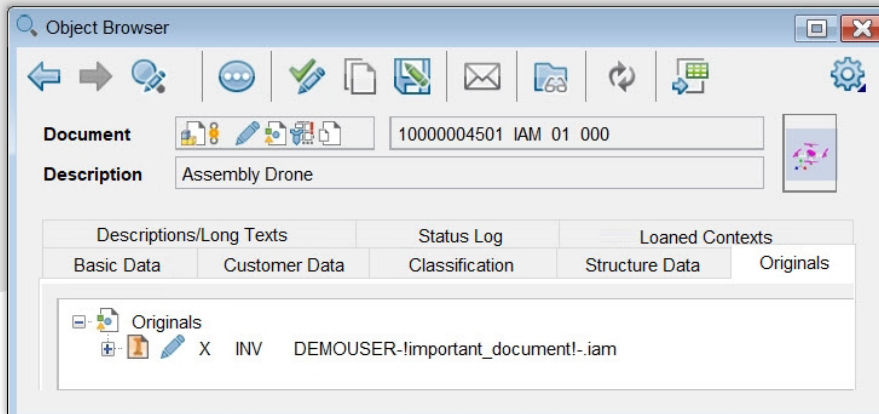
- SAP Engineering Control Center 5.2/1.1
- SAP ECC 6.0 from EhP 7 or SAP S/4HANA

[Back to Overview](#)

# Cideon Part Name Rules Add-On



**Available as Additional  
Consulting Service**



A CAD file with user-specific information in its name

## More Options for Naming Your Files in SAP

The Cideon Part Name Rules Add-On extends the SAP ECTR standard when naming files that are created as originals to an SAP document info record (DIR).

The SAP ECTR offers a set of tokens, i.e. predefined sequences of related naming characters, which serve as placeholders. However, this set is limited to a few SAP DIR keys and thus often does not meet customer requirements.

With the Cideon Add-On, almost any template for file names can be created. In this way, document data and classification attributes can be entered dynamically, which, for example, originate from the properties of a CAD model or its associated drawing with an SAP ECTR interface.

Furthermore, it is possible to use data from other objects for naming by means of a simple BAdI implementation of the SAP ECTR standard.

The Cideon Part Name Rules Add-On replaces the SAP standard module only at runtime of the document creation and has no influence on the performance of the SAP ECTR.

## System Requirements:

- SAP Engineering Control Center 5.2/1.1
- SAP ECC 6.0 from EhP 7 or SAP S/4HANA

[Back to Overview](#)

**CIDEON Software & Services GmbH & Co. KG**

Lochhamer Schlag 11 · D-82166 Gräfelfing  
Phone +49 (0) 89 909003-0 · Fax +49 (0) 89  
909003-250 info@cideon.com · www.cideon.com

PROCESS CONSULTING

ENGINEERING SOFTWARE

IMPLEMENTATION

GLOBAL SUPPORT

FRIEDHELM LOH GROUP

