

# CIDEON

engineering digitized.

Cideon – engineering digitized.

## Cideon SAP Add-Ons

### Small Tools With Big Impact

By using Cideon SAP Add-Ons, companies can achieve a noticeable boost in the entire value chain and throughout the company by providing best practice solutions to optimize efficiency, quality and access management in SAP data management.

Using Cideon SAP Add-Ons can create a noticeable boost in the entire value chain and across the whole company by providing best practice solutions to optimize efficiency, quality and access management in SAP data management. In addition, the Add-ons generate sustainable savings potential in development and project times.

The Cideon SAP Add-Ons can also be integrated into the entire Cideon product range. This provides Cideon customers with maximum efficiency and optimal operation in all aspects of their SAP PLM implementation and product development with SAP.



### Highlights

- Improved integration of all departments involved in product development
- Routine work processes made significantly easier
- Reduced development and project times
- Greater data and process transparency
- Easier decision making
- Increased innovation through technology transfer
- Lower costs and improved quality



PROCESS CONSULTING

ENGINEERING SOFTWARE

IMPLEMENTATION

GLOBAL SUPPORT

FRIEDHELM LOH GROUP



## A Collection of Best Practices

**Cideon Import PDM**

**Cideon CAD Release Migrator**

**Cideon Document Creation Wizard**

**Cideon Title Block Change History**

**Cideon Status Change Assistant**

**Cideon Material Master  
Management Framework**

**Cideon Export PDM**

**Cideon Document Function Manager**

**Cideon Naming Catalog**

**Cideon DMS Log**

**Cideon Mini BOM Module**

**Cideon BOM Management Framework**

### Get the Most Out of SAP

The Cideon SAP Add-Ons integrate efficient, time-saving processing routines and automate everyday processes.

They extend the functionality with practical project tools or additional user interfaces and menus integrated into the SAP GUI. This eliminates the need for multiple transactions and unnecessary multiple data entry. This results in optimized processes for almost all common work steps in SAP Document, Material, BOM and Engineering Change Management.

The Cideon SAP Add-Ons are based on your existing SAP ERP/PLM infrastructure and can be easily implemented into your SAP system without any changes. Settings are made according to individual requirements. All necessary databases and convenient user and administrator interfaces are included. Specific customer creations or adaptations allow for easy expansion options, making Cideon software solutions extremely flexible.

The following Cideon Add-Ons can complement your processes as a project-specific solution:

**Cideon View Manager Solution**

**Cideon Ahead Manager Solution**

**Cideon Shadow / DIR Framework**

**Cideon Location Manager**

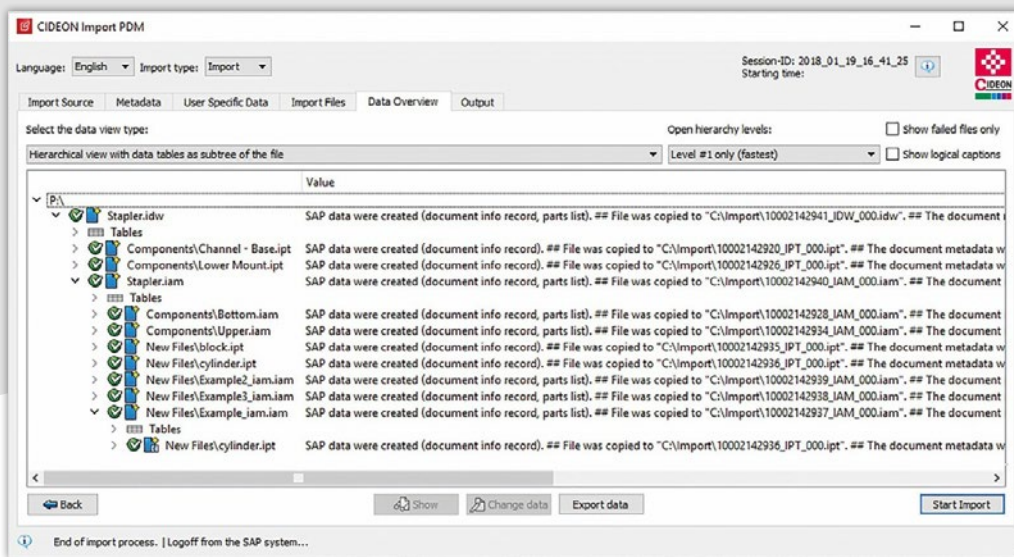
**Cideon Inheritance of Characteristics**

**Cideon Transfer Location Abbreviation  
to Lab/Office**

**Cideon CV0X DIR Enhancement**

**Cideon RFC Server**

# Import PDM



The interface of Cideon Import PDM for SAP offers a simple, adjustable data overview, e.g. with hierarchical or tabular display, as well as status displays and filter.

## (Re-)Import of CAD Original Files, Non-CAD Originals and Directory Structures Into SAP

Cideon Import PDM helps you to replace legacy systems and automatically imports mass data into SAP.

### Functions (Excerpt)

#### SAP Document Management (DMS)

- Automatic creation and modification of SAP Document Info Records (DIR)
- Filling main and classification data
- Object links to SAP objects
- Status change in configurable target status
- Create/edit Bill of Documents based on the CAD structure
- Explode and exchange structures based on referenced CAD files

#### Re-Import

- Create a new document version
- Updating the document structure

#### Cideon Export/Collaboration Import

(Re-)Import after export using the export database in SAP, and external processing for collaborative scenarios in according to status networks and export status.



### Advantages

- Automated import procedures for maximum ease of use
- Saves work for the design and IT departments
- Eliminates time-consuming, repetitive manual tasks
- Fast error analysis through control and test functions
- Simple expansion and highest flexibility
- Easy setup with the Cideon Application Configurator

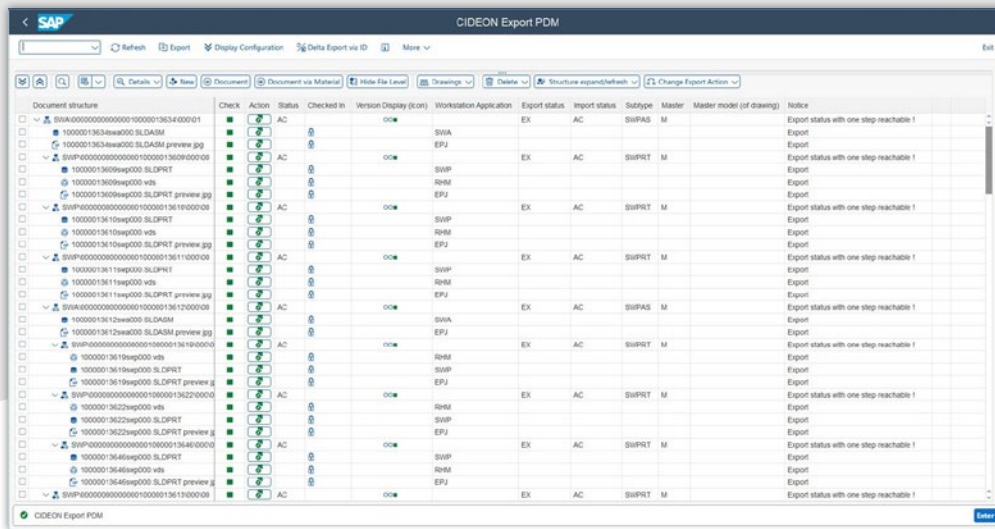
### System Requirements

- SAP System ECC 6.0 from EhP 5 or SAP S/4HANA (On-Premise and Private Cloud)
- SAP GUI 8.00
- MS Windows 10/11

[Back to overview](#)



# Export PDM



The user interface of  
Cideon Export PDM

## Export Documents From SAP With One Click

The Cideon Export PDM Add-On is a powerful tool that makes it easy to export CAD and non-CAD documents from SAP, providing a starting point for collaboration. The supplied CAD data and associated files are re-imported precisely according to the SAP status network, version and accounting for change management. Another part of the Cideon collaboration solution is the Cideon Import PDM Add-On.

### Functions (Excerpt)

- Start Cideon Export PDM from: SAP Transaction, Document Search (CV04N), Product Structure Browser, Object Search in Classes, Document Search by Material (Cideon Function), Cideon Workspace, SAP CDESK, SAP ECTR
- Attach additional files also from non-CAD systems
- Additional security to maintain data consistency through optionally configurable "export" status
- Individual export status possible for each document type
- Select export control parameters
- Expand document and sub-document structures
- Output of a log file to the destination directory
- Consistency check for duplicate entries for different actions
- Preserve all links during export such as xref, parts and assemblies



### Advantages

- Support for Distributed CAD Design Scenarios (collaboration)
- Automated export without user communication
- Data consistency through SAP version and change management
- Easy configuration via SAP maintenance dialogs

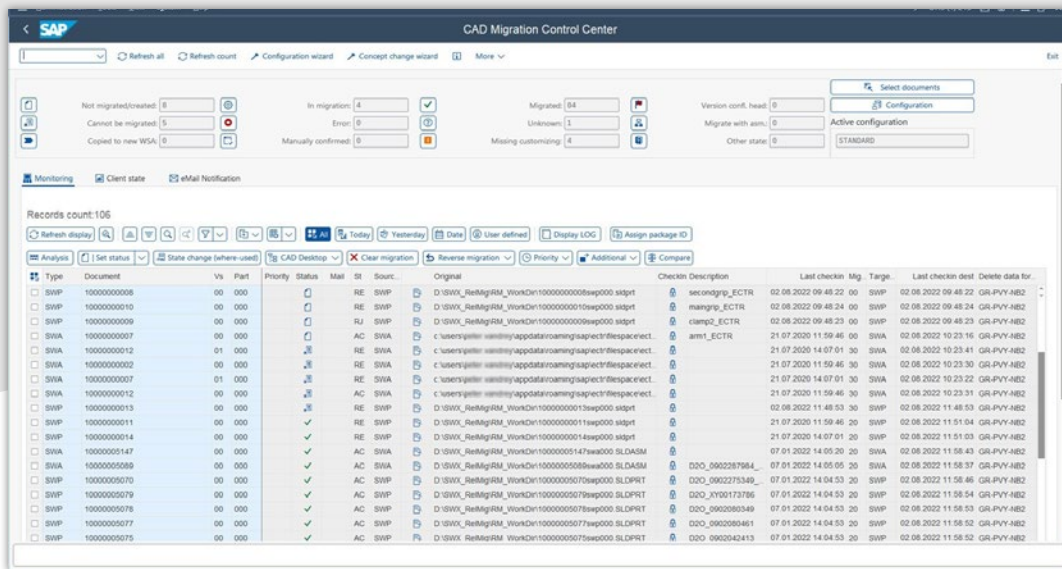
### System Requirements

- SAP System ECC 6.0 from EhP 5 or SAP S/4HANA (On-Premise and Private Cloud)
- SAP GUI 8.00

[Back to overview](#)



# CAD Release Migrator



In SAP, the Migration Control Center (MCC) serves as the control center for CAD migration and is the component that selects data, monitors the migration process, and analyzes errors.

## Ensure Long-Term CAD Data Consistency

When older Inventor or SOLIDWORKS files are opened with a new CAD system release, the data must first be converted internally. Also, unsupported functions within older file formats or poorer performance during processing can result in time-consuming manual preparation. Then, laborious imports or re-imports are usually required to bring the data up to date. It takes a long time before the data is available for actual engineering work.

The Cideon CAD Release Migrator converts files to the latest CAD release. The recalculation of all components, assemblies, standard parts and drawings stored in the SAP Document Management System (DMS) is fully automated. This ensures a high level of data security and quality as well as the use of current, specific CAD functions.

**The result:** Always up-to-date CAD data on a uniform release in the SAP system.

The Cideon CAD Release Migrator consists of the Migration Engine Client (MEC) and the SAP component Migration Control Center (MCC). The MEC uses the SAP Retriever to communicate with the SAP system to exchange data with Inventor or SOLIDWORKS Migrator, which processes the CAD data in the current data format.



### Advantages

- Minimize time spent on day-to-day operations with parallel processing
- Eliminate manual manual activities
- Mass processing
- High data security and quality

The actual migration process takes place outside the SAP system on a CAD workstation. It is possible to integrate customer-specific CAD processing routines.



**AUTODESK**  
Inventor



The Inventor Migrator and the SOLIDWORKS Migrator are included in the standard Cideon CAD Release Migrator.



# CAD Release Migrator

## Bundle Efficient Work Packages

The entire (legacy) database can be searched, analyzed and tested via the SAP MCC using specially adapted functions based on various criteria that are important for the migration. The determined data is then used in summarized and prioritized work packages for the productive CAD migration. Within these work packages, dependent subassemblies and individual parts are also taken into account via loading rules or conflict rules.

## Functions (Excerpt)

### Configuration/Administration

- Convenient migration control center in SAP for administration, with support by wizards
- Control via parameters and activities in the workflow
- Monitoring of the migration process with extensive monitoring functions
- Location-dependent migration (multiple clients per location)
- Project-specific adaptations possible

### Data Analysis Before Migration

- Analysis of the data set with criteria: checked-in, not/never checked-in, version conflicts, etc.
- Simulation of migration for individual parts

### Migration Process

- Central logging in SAP with extensive search and analysis functions for further processing
- Selection according to different criteria: document areas, document types, standard parts, documents in specific storage areas, according to previous version etc.
- Defined status network for work packages
- Load balancing through use of multiple workstations
- Background migration during production operation
- Instant migration (ZeroImpact) or pre-migration with subsequent switchover (BigBang) or a combined approach
- Automatic restart functions in the event of malfunctions
- Storage of migrated data in the SAP Content Server, optionally with new workstation application
- Delta migration



### Useful Additional Tool: Cideon Script Migrator

In addition to our standard CAD migrators for Inventor and SOLIDWORKS, we offer a generic tool for the SAP migration process.

With the Cideon Script Migrator you can easily migrate SAP document files from any other CAD system, Office and other applications, including existing document structures, into work packages and integrate them into the migration process of the Cideon CAD Release Migrator.

## Security

- Manual or automatic backup variants
- Configuration parameters to protect original CAD files
- Authorization concept (function codes) within the SAP control center (MCC)

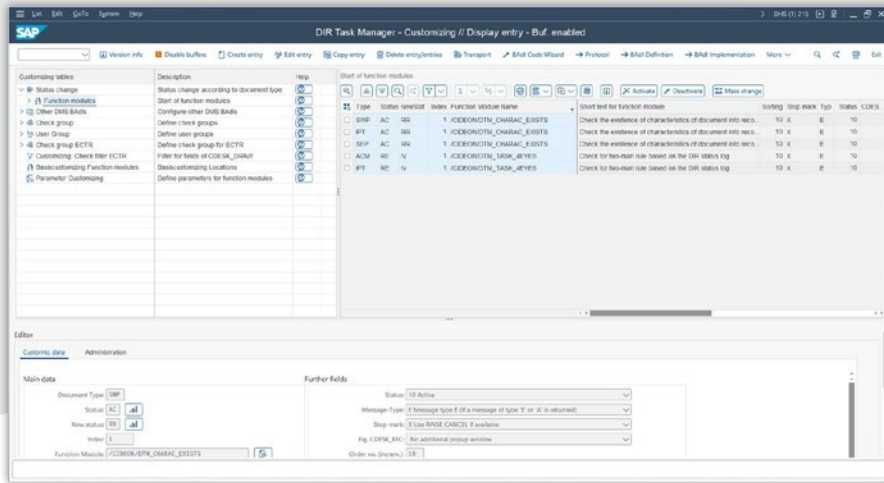
## System Requirements

- SAP System ECC 6.0 from EhP 5 or SAP S/4HANA (On-Premise and Private Cloud)
- SAP GUI 8.00
- Cideon CAD Interface RDP
- Cideon Tools
- CAD systems: Inventor, SOLIDWORKS, generic interface (Script Migrator)

[Back to overview](#)



# Document Function Manager



Customizing of DFM in SAP

## Master Data With High Quality

The Cideon Document Function Manager (DFM) is a central interface that allows SAP administrators to freely define follow-up actions and/or checks after certain triggering SAP events by simple configuration. It contains a set of pre-defined modules for various automated usage scenarios and also allows the integration of customer-specific function modules. Functionality can be assigned (or disabled) to specific user groups without the need for programming and transports in the SAP system.

The user is only indirectly aware of the DFM when, for example, he wants to release a CAD assembly and the status change triggers a status check of all installed structural elements in the background and automatically deletes all unused content versions. In case of conflicts, e.g. because the release can only be carried out according to the 4-eye or 6-eye principle, the user receives solution-oriented system messages. Especially in connection with the SAP Engineering Control Center (ECTR) interfaces, checks can be carried out, but also actions can be executed or, if desired, prevented. In this way, you can always ensure the high quality of your master data despite simple administration.

### Functions (Excerpt)

- Status check of documents and complete document structures (e.g. with release)
- Execution of defined actions in case of document status changes



### Advantages

- Improvement of process quality, through numerous checks and automations in SAP Document Management System
- Immediate use of delivered modules for different application scenarios
- Administration by the specialist department via comfortable user interface
- Customer developments can be managed in one place

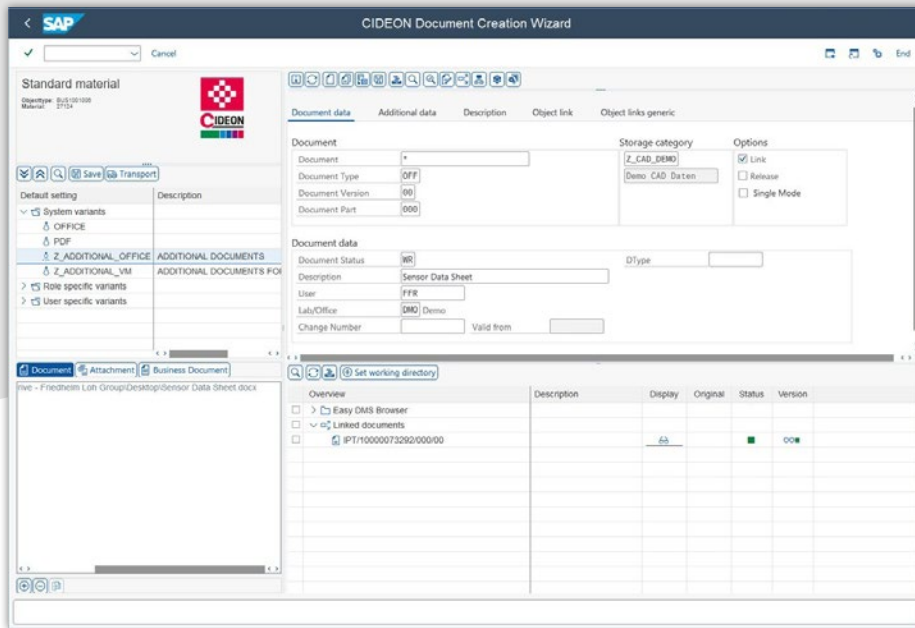
- Document classification checks
- Version control of documents
- Easy integration of custom modules
- Adherence to dependencies between drawings and models
- Notification function (e.g. SAP Express Mail, e-mail)

### System Requirements

- SAP System ECC 6.0 from EhP 5 or SAP S/4HANA (On-Premise and Private Cloud)
- SAP GUI 8.00
- Optional: use in SAP ECTR

[Back to overview](#)


# Document Creation Wizard



The Cideon DCW provides a clear overview of the creation and management of SAP files.

## Your Wizard for Fast, Easy Creation and Administration of SAP documents

The Cideon Document Creation Wizard (DCW) is an SAP add-on that allows you to comprehensively manage your documents after they have been created.

The user-friendly interface brings the necessary transparency to object structures and relationships. The current status of each document is also explained at first glance through corresponding symbols and colors.

### Functions (Excerpt)

- Easy creation of documents in the SAP DMS and Archive Link environment
- Automatic linking with corresponding SAP business objects
- Display of all documents and attachments available for the SAP business object
- Support of standard SAP DMS functions (object links, additional data, multilingual descriptions, etc.)
- Integration via the generic services for the object
- Intuitive file handling via drag and drop
- Process-oriented interface with click-optimized UI
- Storage of presets via Cideon variant access
- Interfaces to other Cideon solutions: Output Management, Conversion Engine and View Manager Solution



### Advantages

- Easy-to-use user interface
- Streamline processes with automated routines
- Transparency through centrally consolidated management of all internal and external product information
- Flexible pre-settings: system-wide, role-based, user- and object-type-specific
- Easy to install

### System Requirements

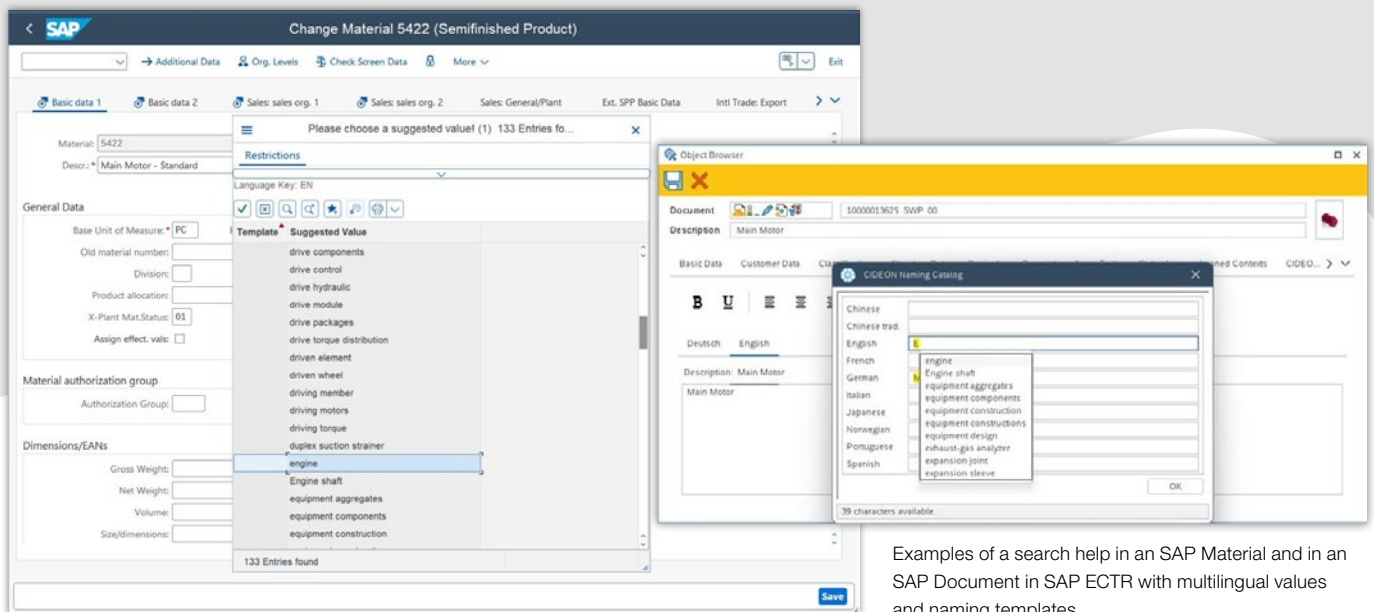
- SAP System ECC 6.0 from EhP 5 or SAP S/4HANA (On-Premise and Private Cloud)
- SAP GUI 8.00
- Cideon Tools

[Back to overview](#)





# Naming Catalog



Examples of a search help in an SAP Material and in an SAP Document in SAP ECTR with multilingual values and naming templates

## Ease-of-Use and Standardization by Extending the Search Help in SAP

Cideon Naming Catalog performs systematic naming by using multilingual catalog value prompts to ensure standardized descriptions of CAD and non-CAD documents and materials in SAP.

By using the search help, the Cideon Add-On not only significantly improves the user-friendliness of SAP. The standardization of master data avoids additional costs that can arise in subsequent processes due to incorrect basic data.

### Functions (Excerpt)

- Automatic search help generation via a search help wizard
- Use of multilingual fixed values and/or templates as multilingual suggested values that can be assigned to different selection menus
- Upload and download functions of CSV data for external processing of suggested values/selection sets by translation agencies
- Search help structure/procedures can be configured and, if necessary, extended or replaced by user-defined installations.



### Advantages

- Easy to use user interface
- Clearly named object descriptions translated into multiple languages
- High usability by accessing the naming catalog directly from the corresponding SAP field
- Centralized, structured administration instead of programming
- Comfortable and flexible administration

### System Requirements

- SAP System ECC 6.0 from EhP 5 or SAP S/4HANA (On-Premise and Private Cloud)
- SAP GUI 8.00
- Optional: use in SAP ECTR
- Cideon Tools

[Back to overview](#)



### Entry of the change history in a drawing titleblock

The Cideon Title Block Change History allows you to easily add a change/version history to any 2D CAD drawing title block.

## Functions (Excerpt)

- 

- Improved and faster traceability of changes
- Meaningful documents
- Automated data transfer to CAD files
- Simple composition through flexible configuration

- SAP System ECC 6.0 from EhP 5 or SAP S/4HANA (On-Premise and Private Cloud)
- SAP GUI 8.00
- Cideon Tools



# DMS Log

The screenshot shows the SAP DMS LOG interface. At the top, there's a header bar with the SAP logo and the title 'DMS LOG'. Below it, there are navigation buttons like 'Display', 'View DIR', 'Refresh', and 'Cancel'. A toolbar with various icons is also present. The main area contains a table with columns: Creator, Date of creation, Created at, Type, Document, Part, Vs, TCode, Original, Appl., Description, Program of Creation, and Category. One row is selected, showing details for a PDF document. Below the table, there are tabs for 'Regular', 'Material', 'Classification data', and 'Administrative data'. The 'Regular' tab is active, showing a 'Key' section with fields for ID log, Transaction code, and Flag. Below this, there's a 'General' section with fields for Creator, Ext. username, Full Name, Department, Function, Telephone, E-Mail Address, Building code, Floor, Program of Cr, Time of Cre, Creation date, Time Stamp, BAdi-definition, Component, Target host, and Target host.

Creator	Date of creation	Created at	Type	Document	Part	Vs	TCode	Original	Appl.	Description	Program of Creation	Category
FFR	20.04.2023	13.10.41	IPT	10000086353	000	00	CV03N	C:\SapWorkDL...	INV	SAPFGUICNTL	SAPFGUICNTL	Z_CAD_DE...
FFR	20.04.2023	13.10.50	IPT	10000086354	000	00	CV03N	C:\SapWorkDL...	INV	SAPFGUICNTL	SAPFGUICNTL	Z_CAD_DE...
CKR	02.05.2023	12.41.47	DOC	TEST ABLAGE KGS	000	00	CV02N	C:\Temp\CK...	PDF	SAPCNVE	SAPCNVE	Z_KGS
FFR	13.09.2023	09.11.06	PDF	10000073305	000	00	CV03N	c:\users\felix.f...	PDF	SAPCNVE	SAPCNVE	Z_CAD_GR
FFR	13.09.2023	09.14.04	DOC	10000089039	DEU	00	CV03N	C:\Users\felix.f...	PDF	SAPCNVE	SAPCNVE	Z_CAD_GR

Cideon DMS Log is integrated in the SAP system.

## Traceability at all Times

The Cideon DMS Log ensures data security and traceability of all accesses to an SAP Document Info Record (DIR) or to the original application files managed with it.

The Cideon DMS Add-On offers extensive search options with individual display of data, e.g. which user has viewed, modified, printed, deleted which documents from which computer with which transactions.

The DMS Log is especially useful when compliance is a requirement in the product development process.

## Functions (Excerpt)

- Extensive search options for data display
- Instant jumping to the DIR
- Query filter, e.g. by quantity, authorization group and classification



## Advantages

- Security: Monitors all access to SAP DIRs and files for enhanced data protection.
- Consistency: Ensures data integrity by tracking every action.
- Traceability: Tracks user activity for compliance purposes.

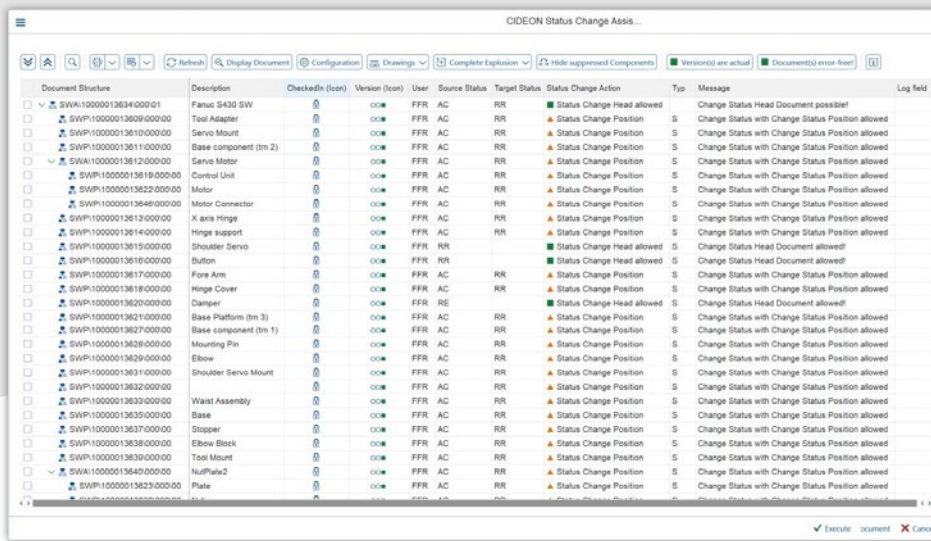
## System Requirements

- SAP System ECC 6.0 from EhP 5 or SAP S/4HANA (On-Premise and Private Cloud)
- SAP GUI 8.00

[Back to overview](#)



# Status Change Assistant



Dialogue of the Cideon Status Change Assistant when changing the status of a complete CAD assembly structure

## Simplified SAP Status Change

The Cideon Status Change Assistant simplifies and saves time when changing the SAP document status of assemblies, drawings and their components. The Cideon Add-On automates the status change of a complete component structure. This greatly simplifies the handling of SAP status management for users. At the same time, consistent release processes along the value chain are ensured, as errors that can occur due to manual or individual status changes, especially with large, structured CAD assemblies, are avoided. The status change of a structure is based on a selected header document and takes place via a defined and differentiated set of rules, taking into account freely definable check mechanisms (e.g. top-down or bottom-up) for the change from initial to specific target status. The file storage in SAP is carried out accordingly, e.g. check-in of the document originals when changing to a check status. Optionally, the checks can be extended to the drawings of CAD models..

### Functions (Excerpt)

- User support for status changes of complete CAD structures
- Rules for status changes based on document type
- Simplify release/pre-release/review requests
- Ensure consistent approvals
- Definable rules for switching to specific target states

### Advantages

- Easy to use interface
- Search help for ease of use
- No translation effort
- No programming effort
- Avoid extra work through standardization of master data
- Automatic consideration of dependent structures (e.g. "reload drawings")
- Control and management of different scenarios via the SAP authorization concept (authorization object, user groups, roles)
- Various options for rules (number of status changes, resolution depth, termination in case of conflicts)

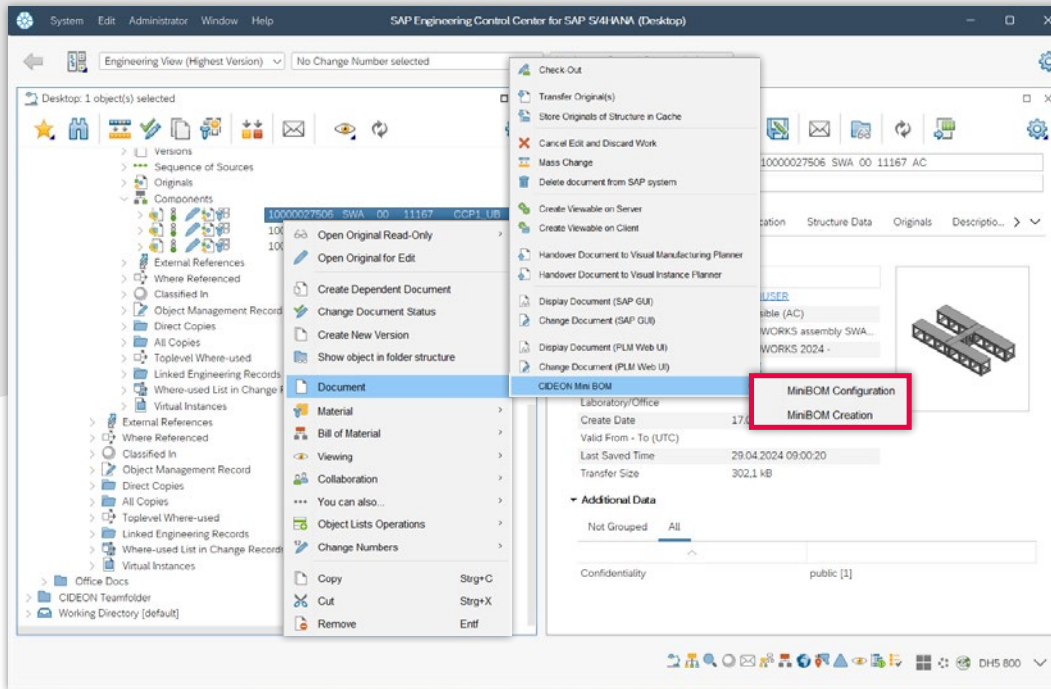
### System Requirements

- SAP System ECC 6.0 from EhP 5 or SAP S/4HANA (On-Premise and Private Cloud)
- SAP GUI 8.00
- Optional: use in SAP ECTR
- Cideon Tools

[Back to overview](#)



## Mini BOM Modul



Mini BOM user menu  
in SAP ECTR

### Advanced SAP BOM Functions

The Cideon Mini BOM Module provides functions for handling raw dimensions in the context of SAP BOMs (creation/update) and for creating individual BOMs.

A user-friendly SAP configuration allows direct integration into the SAP BOM functions with the SAP CDESK and SAP ECTR, offering a high degree of adaptability and process-oriented application.

### Functions (Excerpt)

- Available with the BOM functions of the SAP PLM direct integrations (SAP ECTR, SAP CAD Desktop)
- User-friendly configuration via supplied setting options
- Easy adaptability to the application and application process
- Use of SAP extension technologies (BADls)
- Delivery as SAP transport incl. customizing interface
- The Mini BOM Module can be created/changed via button, e.g. via a SAP ECTR context menu entry or a CDESK button
- Connection of the Mini BOM Module to the Global/Multi-



### Advantages

- Advanced SAP BOM Management
- Include raw dimensions in SAP BOMs
- Easy configuration

Bom via an own switch in Global/MultiBom customizing-possible

### System Requirements

- SAP System ECC 6.0 from EhP 5 or SAP S/4HANA (On-Premise and Private Cloud)
- SAP GUI 8.00
- Cideon Tools

[Back to overview](#)





# Material Master Management Framework

## Simplified SAP Material Management

With the Material Master (MM) Management Framework, we provide standardized building blocks for a variety of use cases to make it easier for your departments to manage the SAP Material Master.

In addition to display, change, search, and copy functions, the easy-to-maintain integration into your individual processes allows you to automatically retrieve the necessary information for the mass creation of SAP materials, for example, when importing external data. SAP material classification can be taken into account as well as the automated creation of plant views.

## Functions (Excerpt)

- Standardized, mass-capable RFC modules for display, change, create, search and info actions for SAP Material Masters
- Consideration of SAP Classification
- Creation and change functions can be used in the background as well as via the SAP GUI
- The creation function supports a CREATE for several views/plants in one step
- The search can be pre-filled with data from CAD
- Data can be adjusted via PRE or POST BADIs for each action



## Advantages

By accelerating the creation of SAP material masters, the Cideon MM Management Framework ensures rapid material availability, including complete plant views.

Departments benefit from reduced manual creation and update of SAP materials through automated background processes.

## Supported Client Applications

- Autodesk Plant 3D
- Eplan Electric P8
- DS 3DEXPERIENCE
- SAP Engineering Control Center Interfaces to CAD systems

## System Requirements

- SAP System ECC 6.0 from EhP 5 or SAP S/4HANA (On-Premise and Private Cloud)
- SAP GUI 8.00

[Back to overview](#)



# BOM Management Framework

## Simplified SAP Bill of Materials (BOM) Management

The standardized Cideon BOM Management Framework flexibly supports the transfer of design results into SAP material, customer order or project BOMs.

Automated derivation of BOM items or components directly from CAD ensures accelerated provision of information for subsequent processes. Especially when changes are made during development, time-consuming manual maintenance is no longer necessary and BOMs are error-free.

### Functions (Excerpt)

- Derivation of BOMs across several drawings or across CAD systems
- Possible parts list types: material, order, project
- The function offers a comparison dialogue
- Sub-items are supported
- Z-fields are taken into account
- Customizing in SAP per BOM type: for additional checks/filling of data/customized sorting, a BADl for sorting can be used (creation)
- Identical objects from different drawings are recognized and only included once in the BOM



### Advantages

- Better process integration through direct BOM derivation
- Reduce time-consuming activities through automation
- Accelerate provision of information to downstream processes, especially in the event of changes

### Supported Client Applications

- Eplan Electric P8
- ERP-PDM Integration Suite
- SAP Engineering Control Center Interfaces to
- CAD systems

### System Requirements

- SAP System ECC 6.0 from EhP 5 or SAP S/4HANA (On-Premise and Private Cloud)
- SAP GUI 8.00

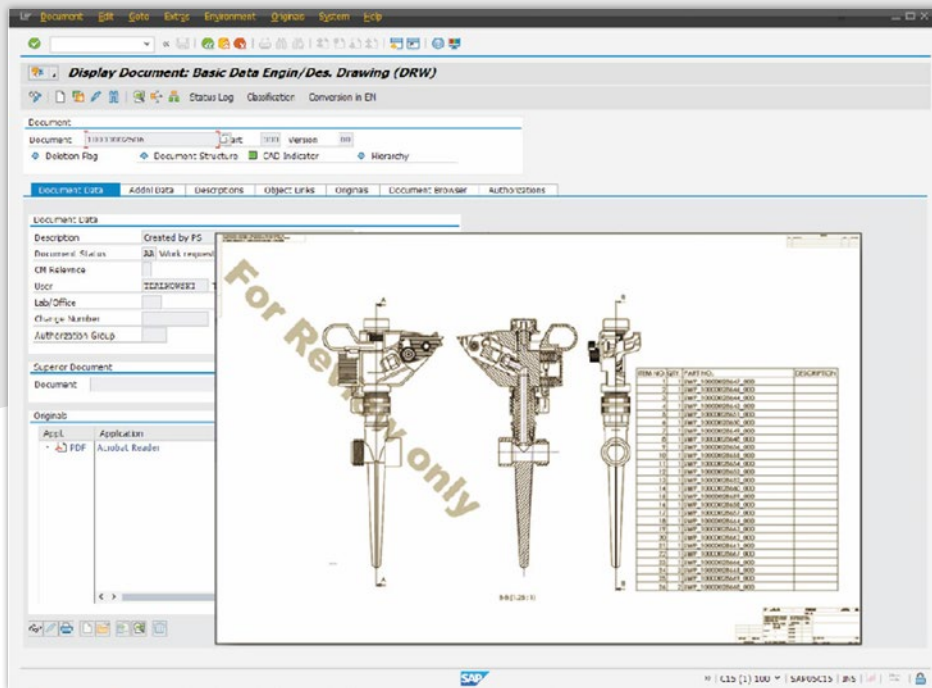
[Back to overview](#)



# View Manager Solution



**Available as Additional Consulting Service**



Display of the current document status during screen display or when printing

## Legally Compliant Documents

With the Cideon View Manager Solution, every function-oriented access (viewing, copying) to documents is registered. This means that the document context and the status of the document at the time of the action can be traced at any time.

### Functions (Excerpt)

- Support for various SAP document applications (e.g. SAP DMS, SAP Knowledge Provider, SAP ArchiveLink)
- SAP keys (document, material, customer number, etc.)
- SAP document attributes (user, status, processing time, description, classification features, etc.)
- SAP business object metadata (material, functional location, equipment, order, customer, etc.)
- Application of watermarks, bitmaps, texts, logos, barcodes, copyright notices, etc.
- Stamping (the graphical Cideon stamp editor is available)
- Display of the prepared document on screen via standard viewers (e.g. Adobe Reader, SAP ECL Viewer, SAP 3D Visual Enterprise Viewer)

### Advantages

- Identification of documents and drawings with available information from SAP ERP/PLM
- Integration of PDF and PDF/A security functions and password protection
- Scalable architecture and individual integration into standard/customer transactions
- Includes Cideon RFC Server and Cideon PDF Editor

### System Requirements

- SAP System ECC 6.0 from EhP 5 or SAP S/4HANA (On-Premise and Private Cloud)
- SAP GUI 8.00
- MS Windows 10/11
- MS Windows Server 2016, 2019, 2022
- Java™ Runtime Environment V 1.8 (x64)
- SAP Java Connector 3.0.19 (x64)
- Cideon Tools

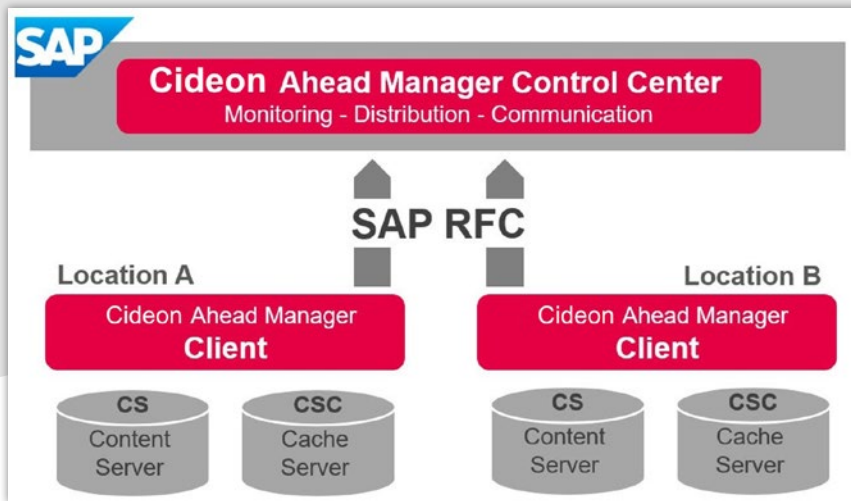
[Back to overview](#)



# Ahead Manager Solution



**Available as Additional Consulting Service**



The architecture, which consists of an SAP part, the Cideon Ahead Manager Control Center and location-dependent clients

## Save Yourself the Wait and get Started

Cideon Ahead Manager ensures fast access to files from remote engineering sites, as fast as from local servers. All common scenarios of cross-site collaboration are supported with the SAP Document Management System (DMS) in conjunction with the proven SAP content/cache server architecture.

### Functions (Excerpt)

- Prefill of the cache server with relevant data from content servers
- Relocate data between content servers
- Automatic relocation and prefill according to defined rules when the status of the SAP Document (DIS) and when the original is stored at the DIS (check-in)
- Manual prefill/relocate according to user request (On Demand)
- Time-shifted work of the clients



### Advantages

- Consistent file access for cross-location collaboration with hugely reduced waiting and loading times
- Flexible configuration and scalability
- Fully automatic, rule-based operation
- Reduced load of the network infrastructure in day-to-day business

### System Requirements

- SAP System ECC 6.0 from EhP 5 or SAP S/4HANA (On-Premise and Private Cloud)
- SAP GUI 8.00
- MS Windows 10/11
- MS Windows Server 2016, 2019, 2022
- JavaTM Runtime Environment V 1.8 (x64)
- SAP Java Connector 3.0.19 (x64)
- Cideon Tools, Cideon RFC Server

[Back to overview](#)

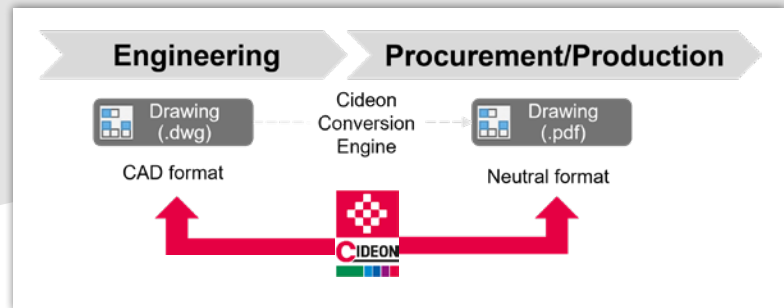


# Shadow / DIR Framework Location Manager

**Available as Additional Consulting Service**

## Shadow / DIR Framework

In conjunction with the Cideon Conversion Engine, the Cideon Add-On enables the separation of native CAD data and logistics data (neutral data). The advantage is the independent use of CAD-based data in logistics processes. Nevertheless, the consistency between CAD origin and logistics usage.



### Functions/Uses

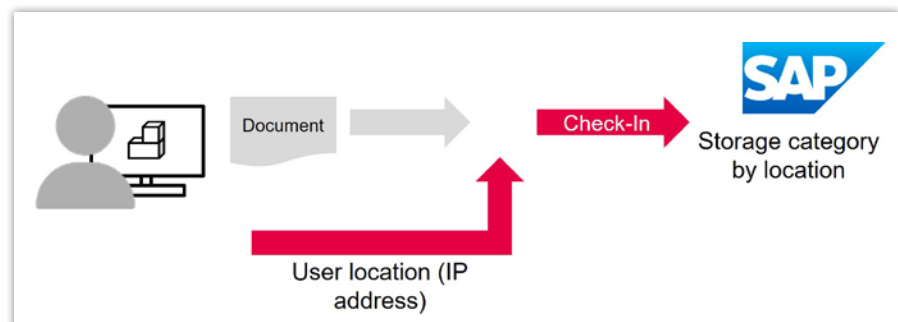
- Different CAD systems are used, but uniform data is to be supplied in purchasing
- Separate documents are to be created for purchasing, which are to be separated from engineering

### System Requirements

- SAP System ECC 6.0 from EhP 5 or SAP S/4HANA (On-Premise and Private Cloud)
- SAP GUI 8.00

## Location Manager

The Location Manager enables a (static) profile-controlled automatic selection of the storage category in the SAP standard, which is dynamically oriented to the user's location. The storage of data is accordingly based on the IP address used.



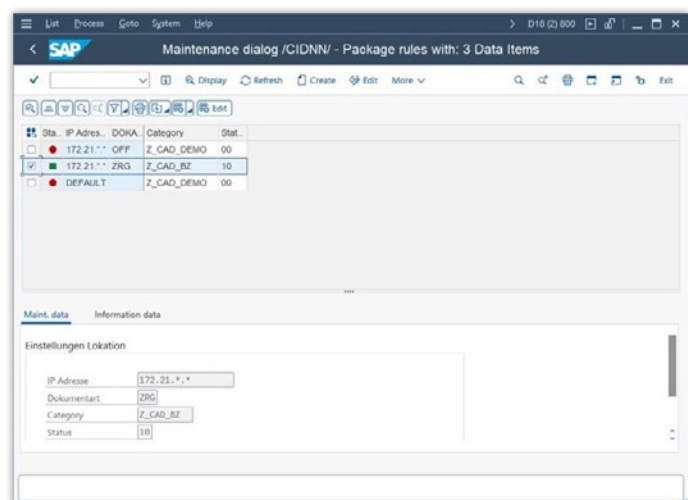
### Functions/Uses

- High-performance storage of CAD data in the content server at the designer's site

### System Requirements

- SAP System ECC 6.0 from EhP 5 or SAP S/4HANA (On-Premise and Private Cloud)
- SAP GUI 8.00

Cideon Location Manager maintenance dialog in SAP



[Back to overview](#)





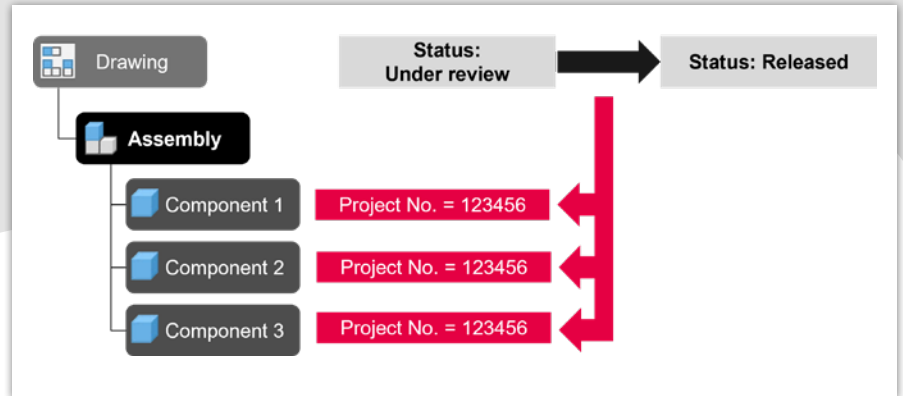
# Inheritance of Characteristics Transfer Location Abbreviation



Available as Additional  
Consulting Service

## Inheritance of Characteristics

With the help of the inheritance of classification data, leading features of a drawing can be transferred to subordinate documents upon release. (e.g. project numbers)



## Functions/Uses

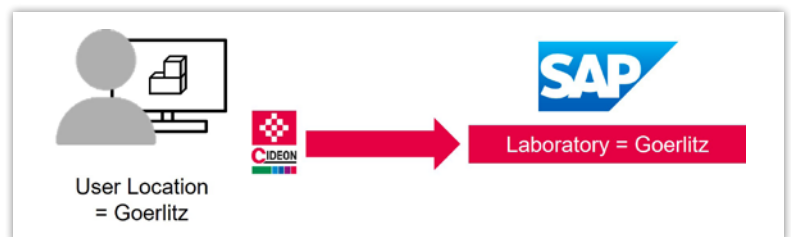
- Properties (e.g. project numbers) should be distributed consistently to avoid duplication of work

## System Requirements

- SAP System ECC 6.0 from EhP 5 or SAP S/4HANA (On-Premise and Private Cloud)
- SAP GUI 8.00

## Transfer Location Abbreviation to Lab/Office

With the help of this Cideon Add-On, the SAP field "Laboratory" is filled with the location code from the user master of the creator when creating SAP DMS documents.

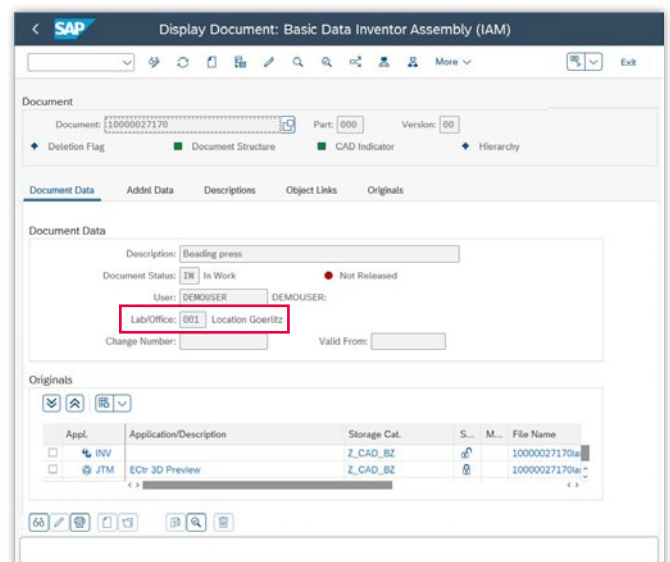


## Functions/Uses

- Automatic transfer of the user's location assignment to the edited document.

## System Requirements

- SAP System ECC 6.0 from EhP 5 or SAP S/4HANA (On-Premise and Private Cloud)
- SAP GUI 8.00



Filled SAP laboratory field  
after document creation

[Back to overview](#)



# CV0X DIR Enhancement RFC Server



Available as an additional  
consulting service!

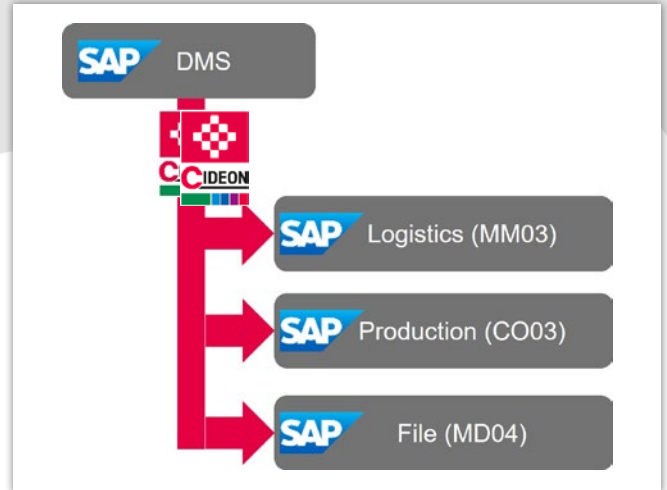
## CV0X DIR Enhancement

The enhancement CV0X DIS allows you to display different information depending on the processing status of the document info record. In addition, other dependent processes can be embedded and controlled.

Like the Cideon SAP ECTR Enhancement Suite for SAP ECTR, this is the extension for the SAP Document Management System (DMS).

### Functions/Uses

- Display of locations for linked materials
- Display of open purchase orders for linked materials
- Integration of function for add-hoc creation of defined exchange formats



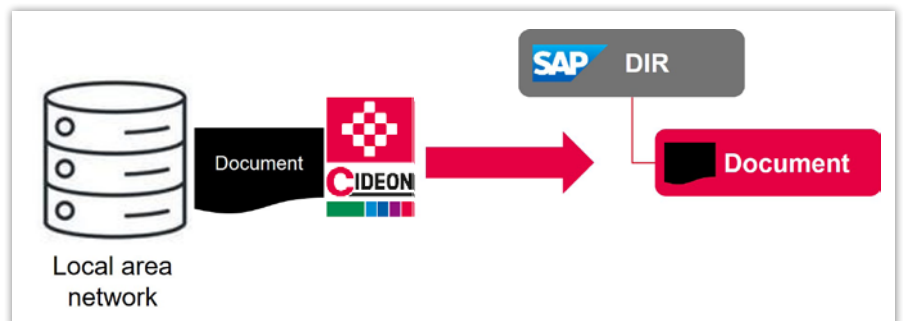
### System Requirements

- SAP System ECC 6.0 from EhP 5 or SAP S/4HANA (On-Premise and Private Cloud)
- SAP GUI 8.00

## RFC Server

The RFC server enables automated upload of documents from a network path to a document info record (DIS).

This is the basis for automated interactions between the workstation and the SAP system for data processing.



### Functions/Uses

- There is no CAD integration.
- PDF documents (drawings) from engineering are to be transferred from local network directory to SAP

### System Requirements

- SAP System ECC 6.0 from EhP 5 or SAP S/4HANA (On-Premise and Private Cloud)
- SAP GUI 8.00
- MS Windows 10/11
- MS Windows Server 2016, 2019, 2022

**CIDEON Software & Services GmbH & Co. KG**

Lochhamer Schlag 11 · D-82166 Gräfelfing  
Phone +49 (0) 89 909003-0 · Fax +49 (0) 89 909003-250  
info@cideon.com · www.cideon.com

[Back to overview](#)



PROCESS CONSULTING

ENGINEERING SOFTWARE

IMPLEMENTATION

GLOBAL SUPPORT

FRIEDHELM LOH GROUP