



CIDEON – engineering digitized.

## CIDEON CDESK2ECTR Workshop Packages

### Switching From SAP CAD Desktop to SAP ECTR Made Easy

System changes always represent major challenges which, under certain circumstances, can also be extremely expensive. CIDEON offers you expert support when switching from your SAP CAD Desktop (CDESK) to SAP® Engineering Control Center (ECTR).

We have experience from a wide variety of projects to enable us to deal with vital issues prior to a switch. The differences in working methods between the SAP CAD Desktop and the new SAP ECTR are demonstrated live in the system. Gaps, which must be considered when making the switch, can then be identified. On this basis, accurate costing is also possible for a specific upgrade project.



### CIDEON Workshops for Your Perfect Switch

For the best possible action recommendation we offer our workshops adapted to your CAD integration landscape in two packages.

**We will be happy to advise you!**

### Our Services

- Analysis of existing landscapes
- Design of an approach that is practical and meets all necessary requirements
- Recommended course of action for the switch provision in the new environment of the CIDEON SAP components for specific customer requirements
- Access to extensive experience from previous projects - a “best practice” approach



**CIDEON**



PROCESS CONSULTING

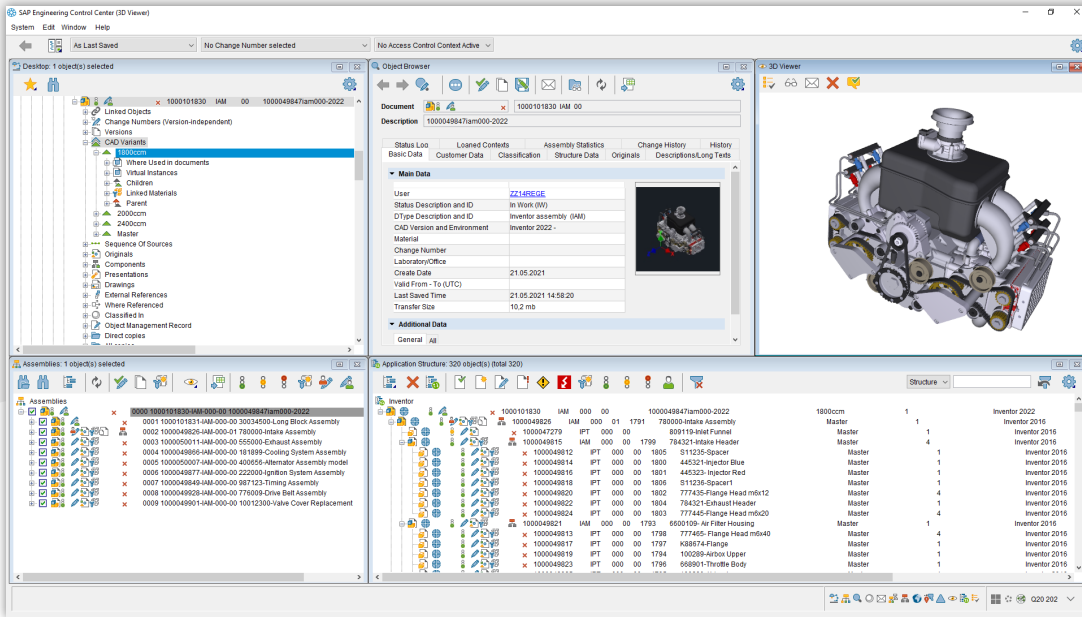
ENGINEERING SOFTWARE

IMPLEMENTATION

GLOBAL SUPPORT

FRIEDHELM LOH GROUP

# Professional Analysis



The SAP ECTR user interface

## Analysis of Your Existing Landscape

All SAP CAD Desktop and document-relevant extensions in your SAP system, and many questions are discussed:

- Are there standard part integrations (CADENAS etc.)?
- Are there special classification tools involved?
- Are CIDEON tools such as Status Change Assistant, Document Function Manager, Naming Catalog used
- Which data is compared, when and how (SAP/CAD, DIR/MM, etc.)?
- Are there automated solutions in the PLM environment that need to be considered (e. g. configurators, batch processes)?
- Are there different working methods or processes for different locations that require consideration?
- Are BOM functions with variable-size item handling (Mini BOM Module) in use?
- Are there special ballooning solutions (e.g. multi-level or configurations)?

## Available Workshop Packages

### CIDEON CDESK2ECTR Scoping

Consideration of one CAD system

- 2-day workshop usually with two CIDEON consultants (onsite or remotely)
- As-is recording and analysis of the existing landscape and processes
- Planning of the necessary and reasonable approach
- Development of a recommendation for action as well as budget information for the changeover
- Customer specific recommendation for the update of the necessary CIDEON SAP components for the new environment

### CIDEON CDESK2ECTR additional CAD Scoping

Extension for an additional CAD system

- Additional 1-day workshop usually with two CIDEON consultants (onsite or remotely)
- As-is recording and analysis of the existing landscape and processes
- Planning of the necessary and reasonable approach
- Development of a recommendation for action as well as budget information for the changeover

## CIDEON Software & Services GmbH & Co. KG

Lochhamer Schlag 11 · D-82166 Gräfelfing  
Tel. +49 (0) 89 909003-0 · Fax +49 (0) 89 909003-250  
info@cideon.com · www.cideon.com