

CIDEON – engineering digitized.

SAP® Engineering Control Center interface to SOLIDWORKS

Cross-Departmental Communications Made Easy

This is where SAP SE makes life easier for customers. It enables data from mechanical engineering, electronics, software development and simulation to be consistently managed within each discipline's own PLM system and within an efficient working environment – the SAP Engineering Control Center (ECTR).

With SAP ECTR, all possibilities for digital transformation, the Digital Twin and IoT are open. This is because the crucial design and product data is available in real time – in every phase of the product development process.

Your advantage: Accelerated and closed process workflows enable you to develop competitive standardized products, shorten innovation cycles and achieve higher product quality.



Highlights

- Centrally operable integration platform
- Ideal interface for SOLIDWORKS users, with a familiar look and feel
- One user interface even when simultaneously using multiple CAD systems
- No relevant knowledge or extensive training necessary
- Easy handling of SAP even for new users
- Quick and easy access to centralized information, data and objects

CIDEON develops the SAP Engineering Control Center interface to SOLIDWORKS exclusively for SAP SE.



PROCESS CONSULTING

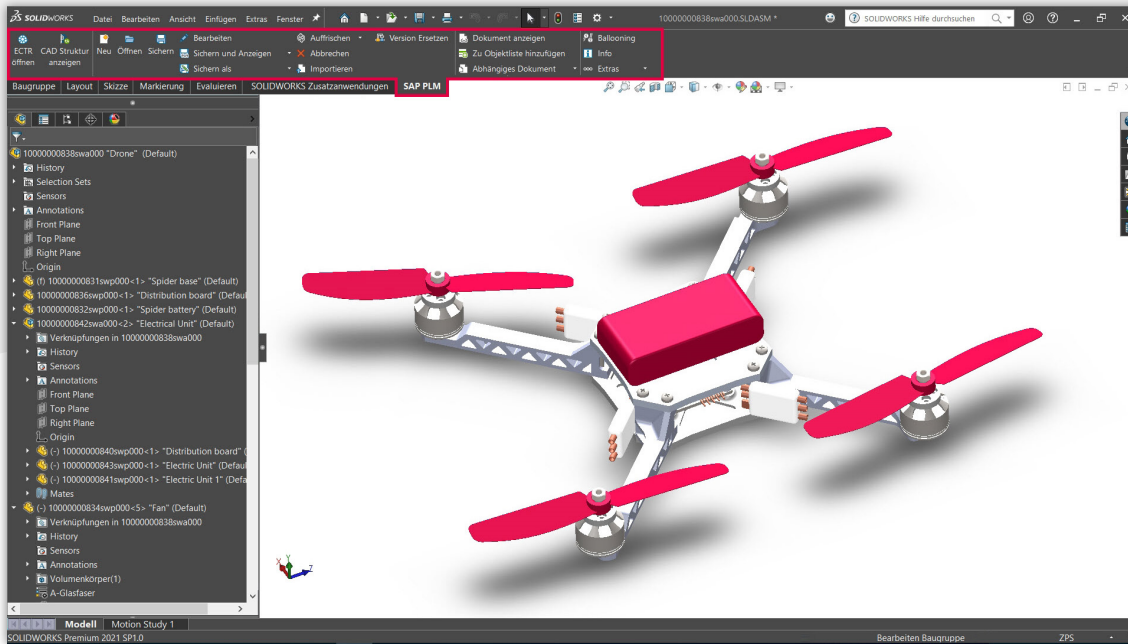
ENGINEERING SOFTWARE

IMPLEMENTATION

GLOBAL SUPPORT

FRIEDHELM LOH GROUP

SOLIDWORKS Product Data – Perfectly Integrated



The integrated SAP ECTR ribbon menu in SOLIDWORKS

Compatible With SAP PLM and SAP Applications

SAP ECTR has been developed by engineers for engineers with its interface to SOLIDWORKS providing designers with the optimal working environment.

SOLIDWORKS users can perform their tasks in familiar work environments and load related original files for editing or viewing directly from SAP via the integrated SAP ECTR ribbon menu.

Integration between SOLIDWORKS and SAP ECTR enables you to seamlessly manage assemblies, parts and drawings, including their dependent documents, as structures in SAP PLM. Easy assignment of SAP materials to SOLIDWORKS assembly structures and the automatic derivation of multi-level SAP Bill of Materials (BOM) guarantee uniform data structures for all personnel involved in development.

All authorized users have access to the original files that are stored in a central, secure repository ("Single Source of Truth"). This enables them to monitor ongoing progress in development and make changes themselves using the SAP change service.

Automated sharing of bidirectional meta data avoids unnecessary manual multiple data entries to give designers more time for value-creation tasks.

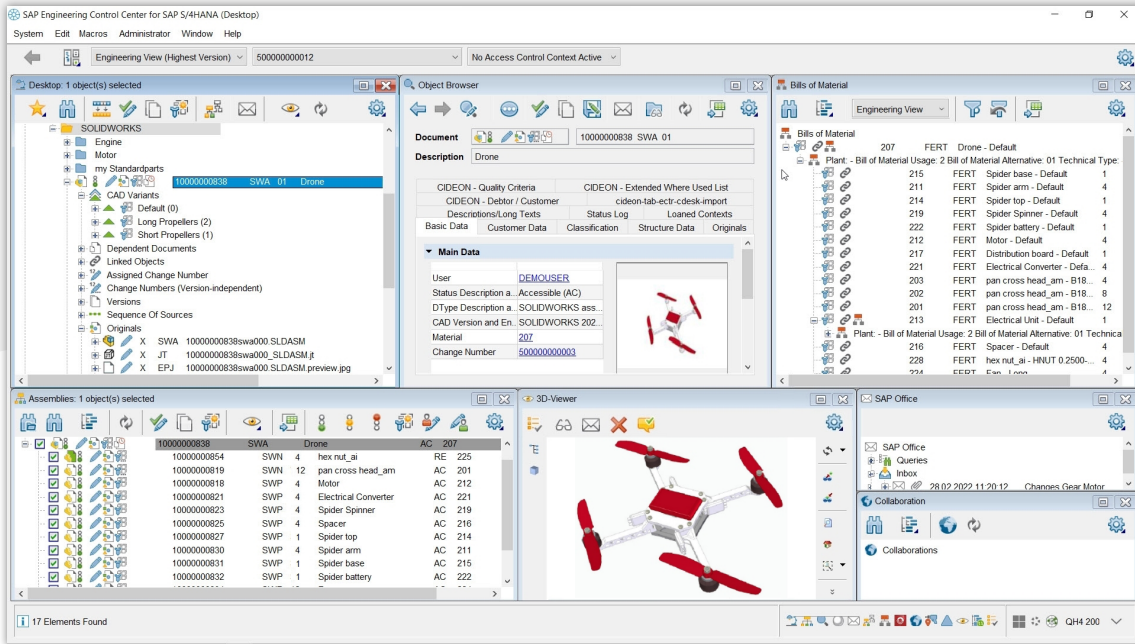


Consultancy you can Trust

In addition to the comprehensive software expertise in CAD and engineering environments, CIDEON offers an extensive portfolio of consultancy and best-practice services to achieve best success in your SAP PLM projects:

- Implementing the SAP ECTR interfaces
- Support in switching from SAP CAD Desktop to SAP ECTR
- Support with SAP EHP release upgrades or when switching to SAP S/4HANA
- Other SAP PLM products and Add-Ons

SAP Engineering Control Center



The SAP ECTR user interface

Simplify Engineering Work

The SAP ECTR interface looks like the Windows® Explorer for easy processing of any CAD and Office sources.

Simple, intuitive data navigation provides a detailed overview of all required information such as documents, materials, BOMs and other SAP objects.

Users can set and position the windows as they wish and view data in personal folders. Context-sensitive, customizable selection menus and meaningful color icons (e.g. on release status) provide an overview of the tasks to be completed.

Copy & paste and drag & drop functions simplify the structured processing of product details.

Users also have access to an integrated help system.

Promoting a Collaborative Product Network

SAP ECTR is the ideal enabler for both concurrent and system engineering as well as for mechatronics by offering a holistic view of all product information. Smooth transition between processes is always ensured by up-to-date and consistent product data being available throughout the company.

Changes in design and production processes are traceable via the integrated SAP Engineering Change Management, thereby increasing transparency. Product-related processes can be easily linked and optimized throughout.

By converting native CAD data into neutral visualization data, all users, including those without CAD software, can access the information by using the integrated SAP 3D Visual Enterprise Viewer. This high-performance solution enables visual communications across all company areas, from engineering and production through to sales and service.



Overview of Features

SAP Document Management System (DMS)

CIDEON supports you in using the SAP DMS by:

- Creating and updating SAP documents
- Importing complete SOLIDWORKS structures
- Automatic derivation and updating of SAP documentation structures from SOLIDWORKS assemblies
- Management of SOLIDWORKS configurations
- Comprehensive version control including digital signature and integrated SAP change management
- Cloning entire assembly structures
- Check-in/Check-out of all original and additional files with edit-locking for checked-out documents
- Automatic creation of preview images
- SAP Content Server for all SOLIDWORKS files and other design formats



CIDEON Add-Ons:

Automation, Optimization, Integration

In addition to engineering standard solutions, CIDEON develops numerous enhancements for implementing special customer requirements in SAP ERP/PLM. CIDEON Add-Ons are easy-to-use tools with extensive functions that enable optimized processes for common work steps in SAP Document, Material, BOM- and Change Management, and they can be easily integrated into SAP ECTR.

Search Functions

- Google®-type searching using QuickSearch
- Visual search support
- Search by match codes, object links, where-used lists, classification, queries and in folder structures, assemblies, BOMs

Search result with preview or as list using Excel®-type filtering in all columns

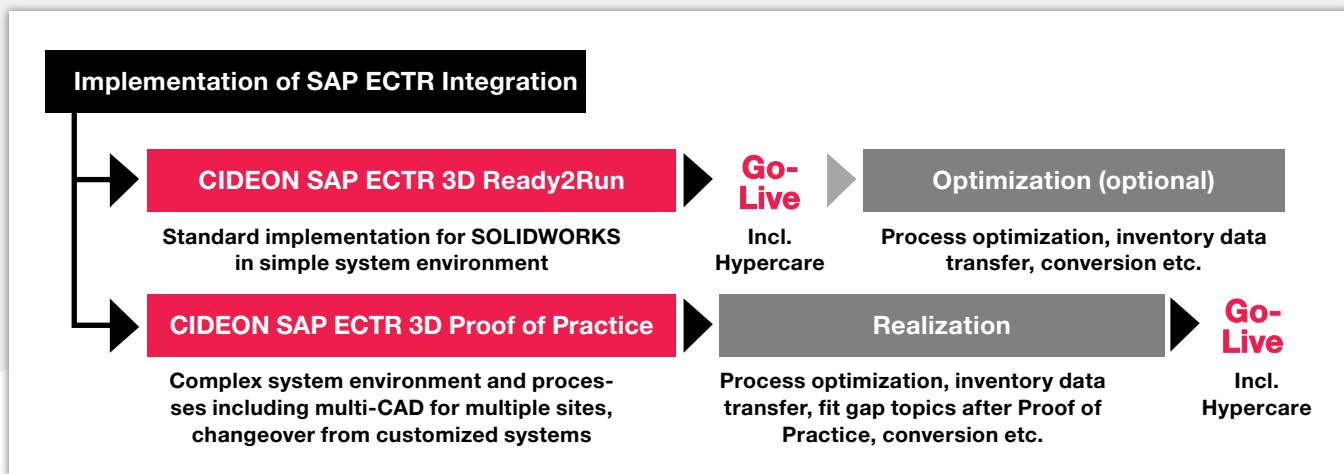
SAP Material and SAP BOM Management

- Automatic creation, linking, updating of SAP Material Masters, for assemblies, parts and electronic components (SOLIDWORKS Electrical), with information from SOLIDWORKS, such as file/physical model properties
- Automatic linking of parts to SAP documents
- Automatic derivation of SAP BOMs from SOLIDWORKS assembly structures

System Requirements

- SAP Engineering Control Center 5.2/1.1
- SAP ECC 6.0 EhP 5 and higher or SAP S/4HANA
- SOLIDWORKS/SOLIDWORKS Electrical 2023, 2022, 2021
- Windows 10/11 (64 bit)

CIDEON Implementation Packages



Get the Benefits of SAP ECTR Quickly and Easily

You would like to benefit from the advantages of a direct integration of SOLIDWORKS to SAP PLM as quickly as possible, but shy away from complex IT projects?

With our two service packages, we make the implementation of SAP ECTR interface to SOLIDWORKS as easy as possible for you, without burdening your valuable time and limited resources with excessive project scopes. Even if you have a complex system landscape and want to integrate additional CAD systems, you are in good hands with us. With a thorough analysis of your individual requirements, implementation based on best practices, well thought-out training concepts and other attractive services, we create the conditions for fast and successful work with SAP ECTR interfaces.

CIDEON Implementation Packages - Professional and Coordinated Support for Your Project Team

We offer our professional support for the implementation of SAP ECTR interfaces via two standardized service packages.

CIDEON SAP ECTR 3D Ready2Run

- Deployment of the SAP ECTR integration in the live environment:
 - Standard configuration in SAP
 - Standard installation & configuration of SAP ECTR
- Key user training
- Support during the test phase
- Implementation of "small" system optimizations
- Initial inventory data review
- Go-Live support including hypercare

CIDEON SAP ECTR 3D Proof of Practice

- Installation of a test environment:
 - Standard configuration in SAP
 - Standard installation & configuration of SAP ECTR
- Key user training
- Support during the test phase
- Implementation of import workshops (high level)
- Fit gap analysis
- Budget estimation for implementation project incl. description
- Realization phase incl. process optimization, inventory data transfer, Fit Gap topics according to proof of practice and conversion
- Go-Live support including hypercare

CIDEON Software & Services GmbH & Co. KG

Lochhamer Schlag 11 · D-82166 Gräfelfing
Tel. +49 (0) 89 909003-0 · Fax +49 (0) 89 909003-250
info@cideon.com · www.cideon.com